

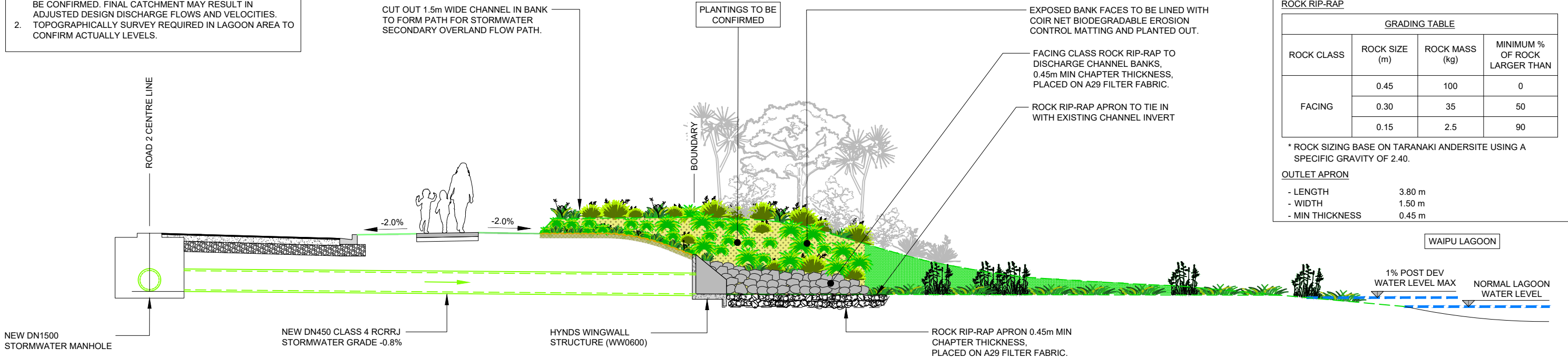
File Name: Z:\J06Sg 3501-4000\3901-3950\3917-C-06 Roading.dwg - C2-6 Plot Date: 03/06/2025 Plot Time: 10:23



LAYOUT PLAN - STORMWATER DISCHARGE POINT 1
SCALE 1:100

NOTES:

1. FINAL UPSTREAM STORMWATER CATCHMENT AREA YET TO BE CONFIRMED. FINAL CATCHMENT MAY RESULT IN ADJUSTED DESIGN DISCHARGE FLOWS AND VELOCITIES.
2. TOPOGRAPHICALLY SURVEY REQUIRED IN LAGOON AREA TO CONFIRM ACTUALLY LEVELS.



TYPICAL SECTION - STORMWATER DISCHARGE POINT 1
SCALE 1:100

STORMWATER DISCHARGE POINT 1

DESIGN PARAMETERS

- DESIGN DISCHARGE FLOW 250 l/s
- DESIGN DISCHARGE VELOCITY 1.96 m/s
- CAPACITY OF DN450 CLASS 4 RCRRJ PIPE AT -0.8% GRADE 313 l/s

ROCK RIP-RAP

GRADING TABLE			
ROCK CLASS	ROCK SIZE (m)	ROCK MASS (kg)	MINIMUM % OF ROCK LARGER THAN
FACING	0.45	100	0
	0.30	35	50
	0.15	2.5	90

* ROCK SIZING BASE ON TARANAKI ANDERSITE USING A SPECIFIC GRAVITY OF 2.40.

OUTLET APRON

- LENGTH 3.80 m
- WIDTH 1.50 m
- MIN THICKNESS 0.45 m

INFORMATION



3 DAVIDSON STREET
NEW PLYMOUTH 4310
Ph. 06 759 0999
© COPYRIGHT RED JACKET LTD

3/06/25	B	DRAFT FOR INFORMATION	BC	LB	-	-
DATE	REV	REV RECORD	BY	CHD	VER	APP

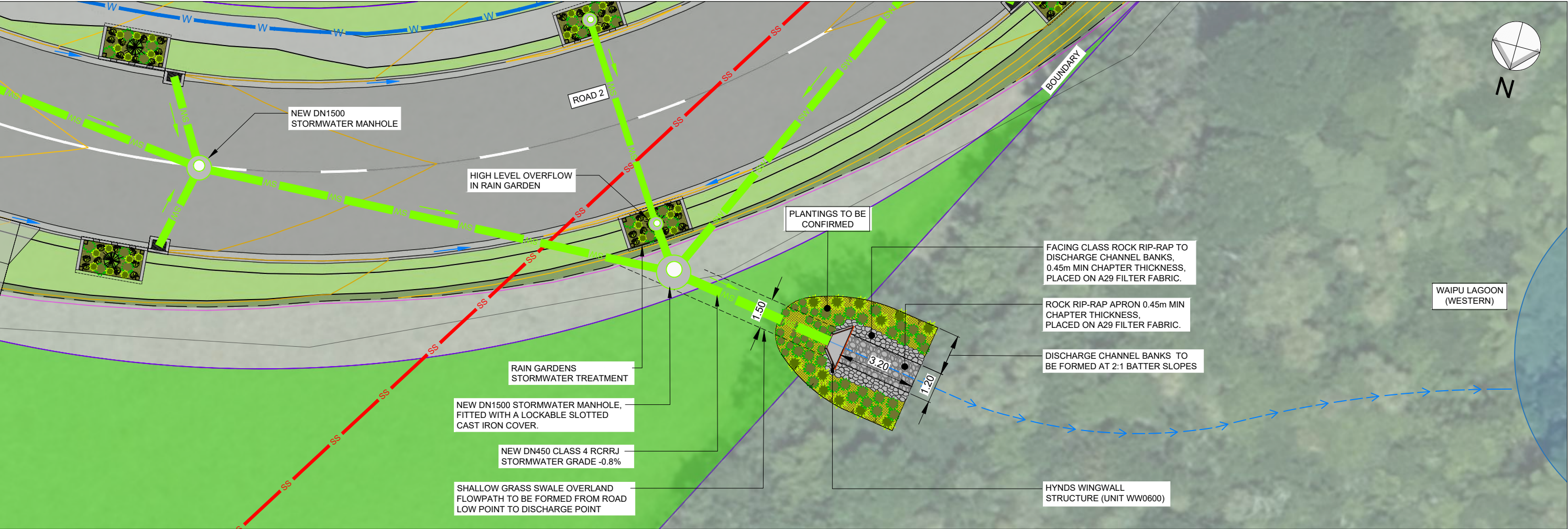
Client
W & C BOLTON

Project
PROPOSED RESIDENTIAL DEVELOPMENT
PARKLANDS AVENUE
BELL BLOCK

Sheet Title
STORMWATER DISCHARGE
POINT 1
PLAN AND TYPICAL SECTION

A3	Sheet No. C2-6	Rev. B
	File No. DWG-3917-C-01	

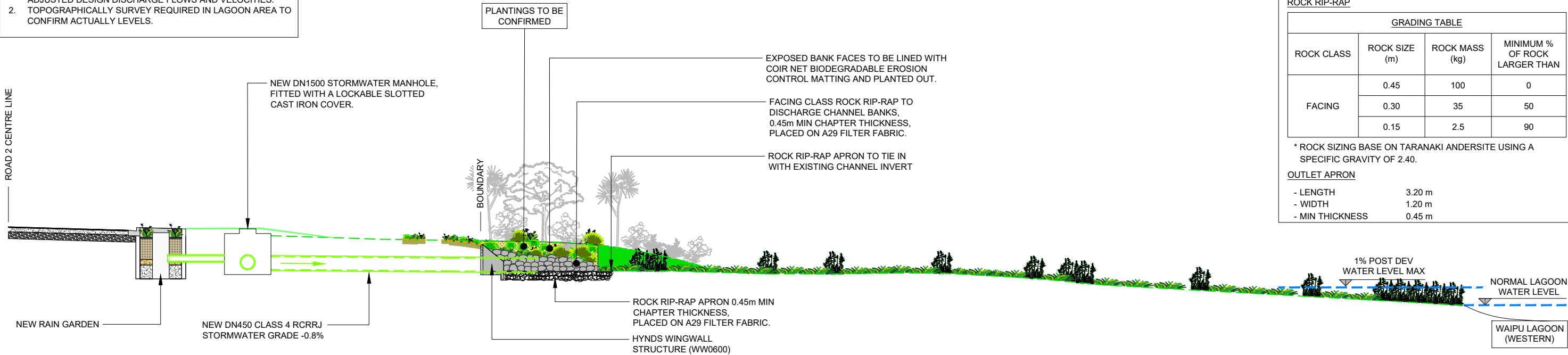
File Name: Z:\J06Sg\3501-4000\3901-3950\DWG\DWG-3917-C-06 Roading.dwg - C2-7 Plot Date: 03/06/2025 Plot Time: 10:23



LAYOUT PLAN - STORMWATER DISCHARGE POINT 2
SCALE 1:200

NOTES:

1. FINAL UPSTREAM STORMWATER CATCHMENT AREA YET TO BE CONFIRMED. FINAL CATCHMENT MAY RESULT IN ADJUSTED DESIGN DISCHARGE FLOWS AND VELOCITIES.
2. TOPOGRAPHICALLY SURVEY REQUIRED IN LAGOON AREA TO CONFIRM ACTUALLY LEVELS.



TYPICAL SECTION - STORMWATER DISCHARGE POINT 2
SCALE 1:150

STORMWATER DISCHARGE POINT 2

DESIGN PARAMETERS

- DESIGN DISCHARGE FLOW 100 l/s
- DESIGN DISCHARGE VELOCITY 1.36 m/s
- CAPACITY OF DN375 CLASS 4 RCRRJ PIPE AT -0.8% GRADE 140 l/s

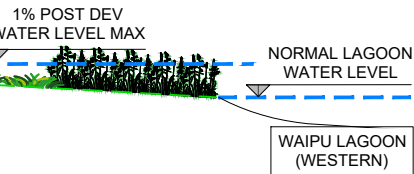
ROCK RIP-RAP

GRADING TABLE			
ROCK CLASS	ROCK SIZE (m)	ROCK MASS (kg)	MINIMUM % OF ROCK LARGER THAN
FACING	0.45	100	0
	0.30	35	50
	0.15	2.5	90

* ROCK SIZING BASE ON TARANAKI ANDERSITE USING A SPECIFIC GRAVITY OF 2.40.

OUTLET APRON

- LENGTH 3.20 m
- WIDTH 1.20 m
- MIN THICKNESS 0.45 m



INFORMATION



3 DAVIDSON STREET
NEW PLYMOUTH 4310
Ph. 06 759 0999
© COPYRIGHT RED JACKET LTD

3/06/25	B	DRAFT FOR INFORMATION	BC	LB	-	-
DATE	REV	REV RECORD	BY	CHD	VER	APP

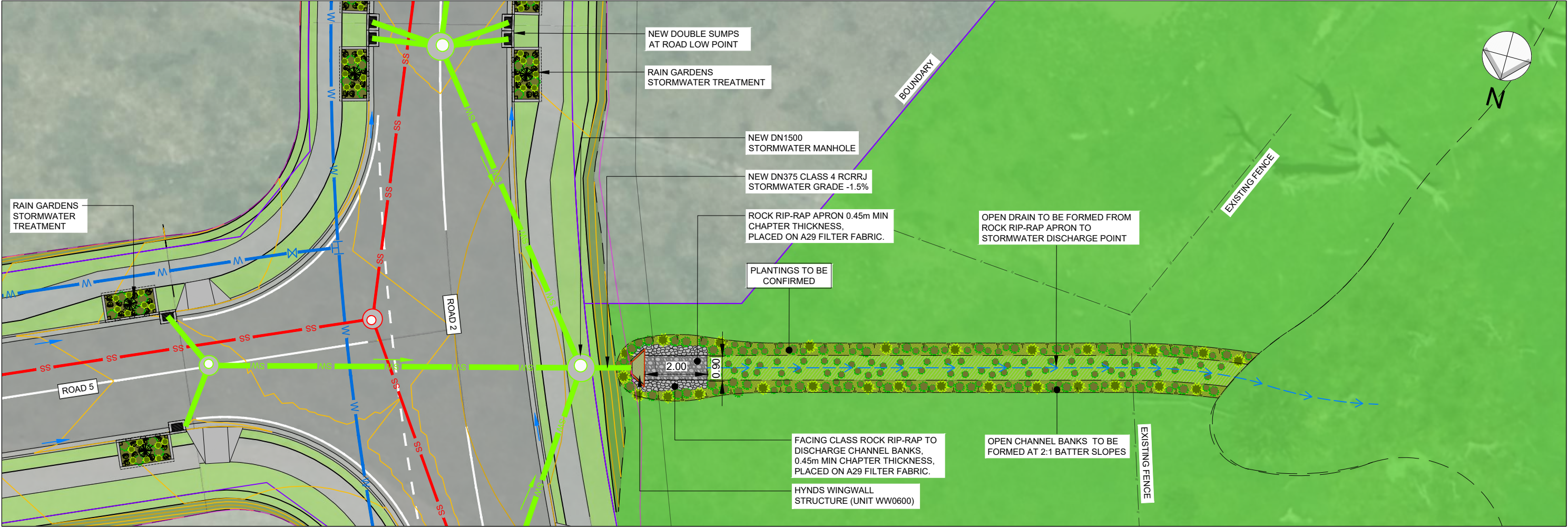
Client
W & C BOLTON

Project
PROPOSED RESIDENTIAL DEVELOPMENT
PARKLANDS AVENUE
BELL BLOCK

Sheet Title
STORMWATER DISCHARGE
POINT 2
PLAN AND TYPICAL SECTION

Sheet No.
A3
C2-7
Rev.
B
File No.
DWG-3917-C-01

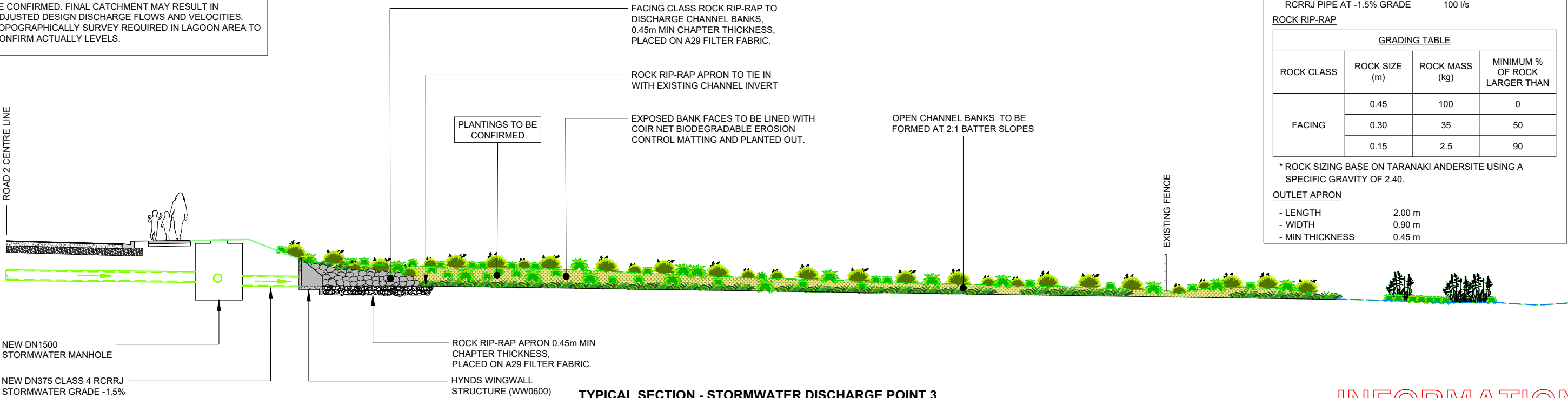
File Name: Z:\JOB\Sg 3501-4000\3901-3950\3917-Parklands Ave Subdivision - Stage 6\DWG\DWG-3917-C-06 Roading.dwg - C2-8 Plot Date: 03/06/2025 Plot Time: 10:24



LAYOUT PLAN - STORMWATER DISCHARGE POINT 3
SCALE 1:250

NOTES:

1. FINAL UPSTREAM STORMWATER CATCHMENT AREA YET TO BE CONFIRMED. FINAL CATCHMENT MAY RESULT IN ADJUSTED DESIGN DISCHARGE FLOWS AND VELOCITIES.
2. TOPOGRAPHICALLY SURVEY REQUIRED IN LAGOON AREA TO CONFIRM ACTUALLY LEVELS.



TYPICAL SECTION - STORMWATER DISCHARGE POINT 3
SCALE 1:150

STORMWATER DISCHARGE POINT 3

DESIGN PARAMETERS

- DESIGN DISCHARGE FLOW 60 l/s
- DESIGN DISCHARGE VELOCITY 1.51 m/s
- CAPACITY OF DN300 CLASS 4 RCRRJ PIPE AT -1.5% GRADE 100 l/s

ROCK RIP-RAP

GRADING TABLE			
ROCK CLASS	ROCK SIZE (m)	ROCK MASS (kg)	MINIMUM % OF ROCK LARGER THAN
FACING	0.45	100	0
	0.30	35	50
	0.15	2.5	90

* ROCK SIZING BASE ON TARANAKI ANDERSITE USING A SPECIFIC GRAVITY OF 2.40.

OUTLET APRON

- LENGTH 2.00 m
- WIDTH 0.90 m
- MIN THICKNESS 0.45 m

INFORMATION



3 DAVIDSON STREET
NEW PLYMOUTH 4310
Ph. 06 759 0999
© COPYRIGHT RED JACKET LTD

3/06/25	B	DRAFT FOR INFORMATION	BC	LB	-	-
DATE	REV	REV RECORD	BY	CHD	VER	APP

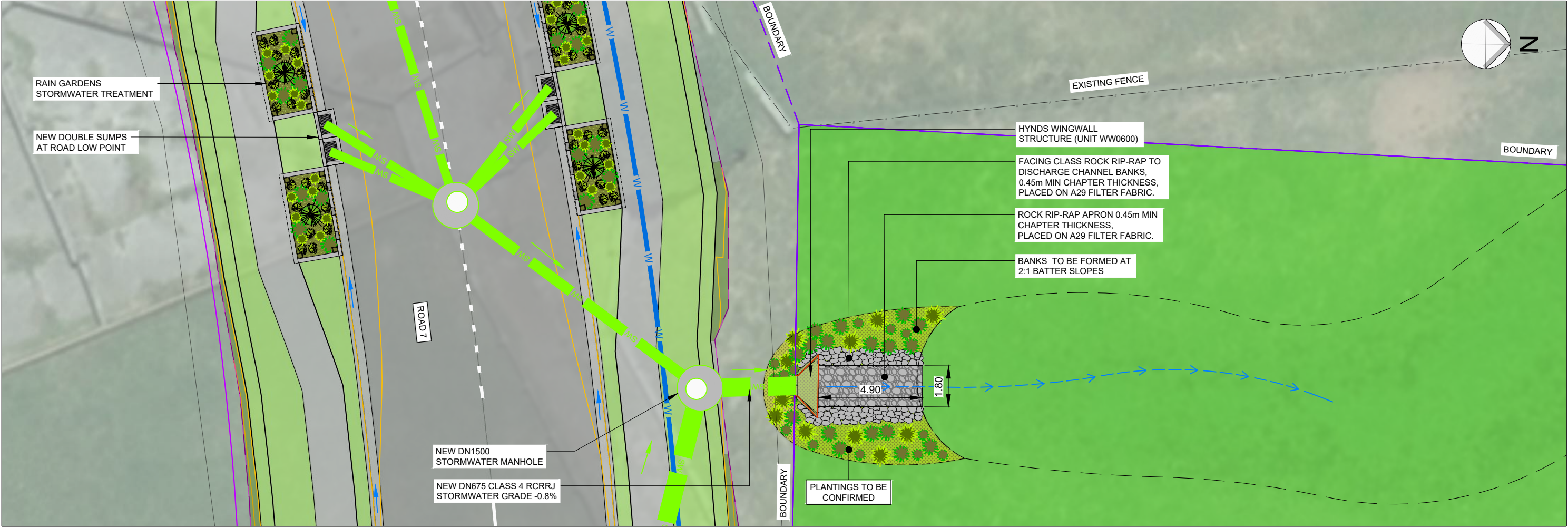
Client
W & C BOLTON

Project
PROPOSED RESIDENTIAL DEVELOPMENT
PARKLANDS AVENUE
BELL BLOCK

Sheet Title
STORMWATER DISCHARGE
POINT 3
PLAN AND TYPICAL SECTION

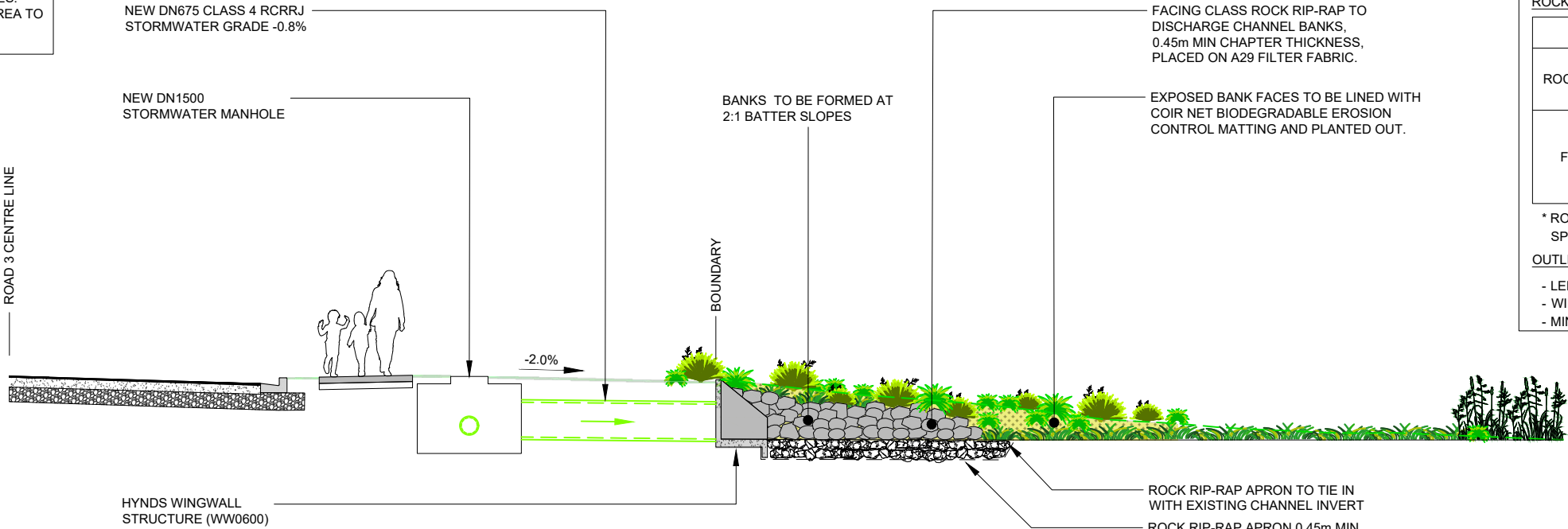
Sheet No.	Rev.
A3	B
C2-8	
File No.	
DWG-3917-C-01	

File Name: Z:\J06Sg 3501-4000\3901-3950\3917-C-06 Roading.dwg - C2-9 Plot Date: 03/06/2025 Plot Time: 10:24



LAYOUT PLAN - STORMWATER DISCHARGE POINT 4
SCALE 1:150

- NOTES:
1. FINAL UPSTREAM STORMWATER CATCHMENT AREA YET TO BE CONFIRMED. FINAL CATCHMENT MAY RESULT IN ADJUSTED DESIGN DISCHARGE FLOWS AND VELOCITIES.
 2. TOPOGRAPHICALLY SURVEY REQUIRED IN LAGOON AREA TO CONFIRM ACTUALLY LEVELS.



TYPICAL SECTION - STORMWATER DISCHARGE POINT 4
SCALE 1:100

STORMWATER DISCHARGE POINT 4			
DESIGN PARAMETERS			
- DESIGN DISCHARGE FLOW	510 l/s		
- DESIGN DISCHARGE VELOCITY	1.88 m/s		
- CAPACITY OF DN600 CLASS 4 RCRRJ PIPE AT -0.8% GRADE	512 l/s		
ROCK RIP-RAP			
GRADING TABLE			
ROCK CLASS	ROCK SIZE (m)	ROCK MASS (kg)	MINIMUM % OF ROCK LARGER THAN
FACING	0.45	100	0
	0.30	35	50
	0.15	2.5	90
* ROCK SIZING BASE ON TARANAKI ANDERSITE USING A SPECIFIC GRAVITY OF 2.40.			
OUTLET APRON			
- LENGTH	4.90 m		
- WIDTH	1.80 m		
- MIN THICKNESS	0.45 m		

INFORMATION



3 DAVIDSON STREET
NEW PLYMOUTH 4310
Ph. 06 759 0999
© COPYRIGHT RED JACKET LTD

3/06/25	B	DRAFT FOR INFORMATION	BC	LB	-	-
DATE	REV	REV RECORD	BY	CHD	VER	APP

Client
W & C BOLTON

Project
PROPOSED RESIDENTIAL DEVELOPMENT
PARKLANDS AVENUE
BELL BLOCK

Sheet Title
STORMWATER DISCHARGE
POINT 3
PLAN AND TYPICAL SECTION

A3	Sheet No. C2-9	Rev. B
File No. DWG-3917-C-01		