

# W & C BOLTON

## PROPOSED DEVELOPMENT

### PARKLANDS AVE, BELL BLOCK

SHEET No.	DESCRIPTION	12/03/25	3/06/25			
C2-1	TITLESHEET	A	B			
C2-2	SITE OVERVIEW PLAN	A	B			
C2-3	TYPICAL RAIN GARDEN - LAYOUT PLAN & SECTION VIEW	A	B			
C2-4	RAIN GARDEN TYPICAL LAYOUT AND SECTION VIEW	A	B			
C2-5	RAIN GARDEN DRAINAGE AND FILTER MEDIA LAYERS DETAILS	A	B			
C2-6	STORMWATER DISCHARGE POINT 1 - PLAN AND TYPICAL SECTION	A	B			
C2-7	STORMWATER DISCHARGE POINT 2 - PLAN AND TYPICAL SECTION	A	B			
C2-8	STORMWATER DISCHARGE POINT 3 - PLAN AND TYPICAL SECTION	A	B			
C2-9	STORMWATER DISCHARGE POINT 4 - PLAN AND TYPICAL SECTION	A	B			
C3-1	PLAN - ROADING & STORMWATER LAYOUT	A	B			
C3-2	PLAN - ROADING & STORMWATER LAYOUT	A	B			
C3-3	PLAN - ROADING & STORMWATER LAYOUT	A	B			
C3-4	PLAN - ROADING & STORMWATER LAYOUT	A	B			
C3-5	PLAN - ROADING & STORMWATER LAYOUT	A	B			
<del>C3-6</del>	<del>PLAN - PROPOSED ROUNDABOUT 1 LAYOUT</del>	<del>A</del>				
<del>C3-7</del>	<del>PLAN - PROPOSED ROUNDABOUT 2 LAYOUT</del>	<del>A</del>				
C4-1	TYPICAL ROAD CROSS SECTIONS - ROADS 1 & 7	A	B			
C4-2	TYPICAL ROAD CROSS SECTIONS - ROADS 2, 3, 4, 5, 6 & 9	A	B			
C4-3	TYPICAL ROAD CROSS SECTION - IMPACT AVE (ROAD 8)	A	B			
C4-4	SERVICE TRENCH DETAIL	A	B			
C4-5	TYPICAL ROAD CROSS SECTIONS - ROAD 2 CUT/FILL BATTERS		B			
C5-1	SITE OVERVIEW PLAN - STORMWATER	A	B			
C5-2	STORMWATER LAYOUT PLAN & PROFILE OUTLET A - SWMH A5	A	B			
C5-3	STORMWATER LAYOUT PLAN & PROFILE SWMH A5 - SWMH A8	A	B			
C5-4	STORMWATER LAYOUT PLAN & PROFILE SWMH A2 - SWMH A2.4	A	B			
C5-5	STORMWATER LAYOUT PLAN & PROFILE SWMH A5 - SWMH A5.4	A	B			
C5-6	STORMWATER LAYOUT PLAN & PROFILE OUTLET B - SWMH B5	A	B			
C5-7	STORMWATER LAYOUT PLAN & PROFILE SWMH B5 - SWMH B7	A	B			
C5-8	STORMWATER LAYOUT PLAN & PROFILE SWMH B2 - SWMH B2.4	A	B			
C5-9	STORMWATER LAYOUT PLAN & PROFILE OUTLET C - SWMH C3	A	B			
C5-10	STORMWATER LAYOUT PLAN & PROFILE OUTLET D - SWMH D6	A	B			
C5-11	STORMWATER LAYOUT PLAN & PROFILE SWMH D2 - 2.1 & SWMH D5 - D5.2	A	B			
C5-12	STORMWATER LAYOUT PLAN & PROFILE SWMH D1 - SWMH D1.2	A	B			

SHEET No.	DESCRIPTION	12/03/25	3/06/25			
C6-1	WATER RETICULATION LAYOUT PLAN - ROAD 1 CH 0 TO 360	A	B			
C6-2	WATER RETICULATION LAYOUT PLAN - ROAD 1 CH 360 TO 700	A	B			
C6-3	WATER RETICULATION LAYOUT PLAN - ROAD 1 CH 760 TO 727	A	B			
C6-4	WATER RETICULATION LAYOUT PLAN - ROAD 2 CH 0 TO 280	A	B			
C6-5	WATER RETICULATION LAYOUT PLAN - ROAD 2 CH 280 TO 620	A	B			
C6-6	WATER RETICULATION LAYOUT PLAN - ROAD 2 CH 620 TO 690	A	B			
C6-7	WATER RETICULATION LAYOUT PLAN - ROAD 7 CH 0 TO 237	A	B			
C6-8	WATER RETICULATION LAYOUT PLAN - ROAD 3 CH 0 TO 80	A	B			
C6-9	WATER RETICULATION LAYOUT PLAN - ROAD 4 CH 0 TO 155	A	B			
C6-10	WATER RETICULATION LAYOUT PLAN - ROAD 5 CH0 TO 160	A	B			
C6-11	WATER RETICULATION LAYOUT PLAN - ROAD 6 CH0 TO 164	A	B			
C6-12	WATER RETICULATION LAYOUT PLAN - IMPACT AVE CH0 TO 176	A	B			
C7-1	SITE OVERVIEW PLAN - SEWER	A	B			
C7-2	SEWER - LAYOUT PLAN & PROFILE - EX. SSMH (ID40029127) - SSMH 2	A	B			
C7-3	SEWER - LAYOUT PLAN & PROFILE - SSMH 2 - SSMH 5	A	B			
C7-4	SEWER - LAYOUT PLAN & PROFILE - SSMH 5 - SSMH 7 (ROAD 2)	A	B			
C7-5	SEWER - LAYOUT PLAN & PROFILE - SSMH 7 - SSMH 9 (ROAD 1)	A	B			
C7-6	SEWER - LAYOUT PLAN & PROFILE - SSMH 9 - SSMH 10 (ROAD 1)	A	B			
C7-7	SEWER - LAYOUT PLAN & PROFILE - SSMH 10 - SSMH 11 (ROAD 1)	A	B			
C7-8	SEWER - LAYOUT PLAN & PROFILE - SSMH 11 - SSMH 12 (ROAD 1)	A	B			
C7-9	SEWER - LAYOUT PLAN & PROFILE - SSMH 12 - SSMH 14 (ROAD 1)	A	B			
C7-10	SEWER - LAYOUT PLAN & PROFILE - SSMH 14 - EX. SSMH (ID40028935)	A	B			
C7-11	SEWER - LAYOUT PLAN & PROFILE - EX. SSMH (ID40172353) - SSMH 7	A	B			
C7-12	SEWER - LAYOUT PLAN & PROFILE - SSMH 2 - SSMH 2.3 (ROAD 2)	A	B			
C7-13	SEWER - LAYOUT PLAN & PROFILE - SSMH 2.3 - SSMH 2.5 (ROAD 2)	A	B			
C7-14	SEWER - LAYOUT PLAN & PROFILE - SSMH 2.5 - SSMH 2.7 (ROAD 2 & 5)	A	B			
C7-15	SEWER - LAYOUT PLAN & PROFILE - SSMH 2.7 - SSMH 2.9 (ROAD 7)	A	B			
C7-16	SEWER - LAYOUT PLAN & PROFILE - SSMH 3 - SSMH 3.2 (ROAD 3)	A	B			
C7-17	SEWER - LAYOUT PLAN & PROFILE - SSMH 4 - SSMH 4.3 (ROAD 4)	A	B			
C7-18	SEWER - LAYOUT PLAN & PROFILE - SSMH 5 - SSMH 5.3 (ROAD 5)	A	B			
C7-19	SEWER - LAYOUT PLAN & PROFILE - SSMH 5.3 - SSMH 5.5 (ROAD 6)	A	B			
C7-20	SEWER - LAYOUT PLAN & PROFILE - SSMH 9 - SSMH 9.1 (ROAD 6)	A	B			
C7-21	SEWER - LAYOUT PLAN & PROFILE - SSMH 7 - SSMH 7.2.3 (IMPACT AVE)	A	B			
C7-22	SEWER - LAYOUT PLAN & PROFILE - SSMH 10 - SSMH 10.1 (ROAD 9)	A	B			
C8-1	SITE EARTHWORKS PLAN	A	B			

INFORMATION



3 DAVIDSON STREET  
NEW PLYMOUTH 4310  
Ph. 06 759 0999  
© COPYRIGHT RED JACKET LTD

3/06/25	B	DRAFT FOR INFORMATION	BC	LB	-	-
DATE	REV	REV RECORD	BY	CHD	VER	APP

Client  
W & C BOLTON

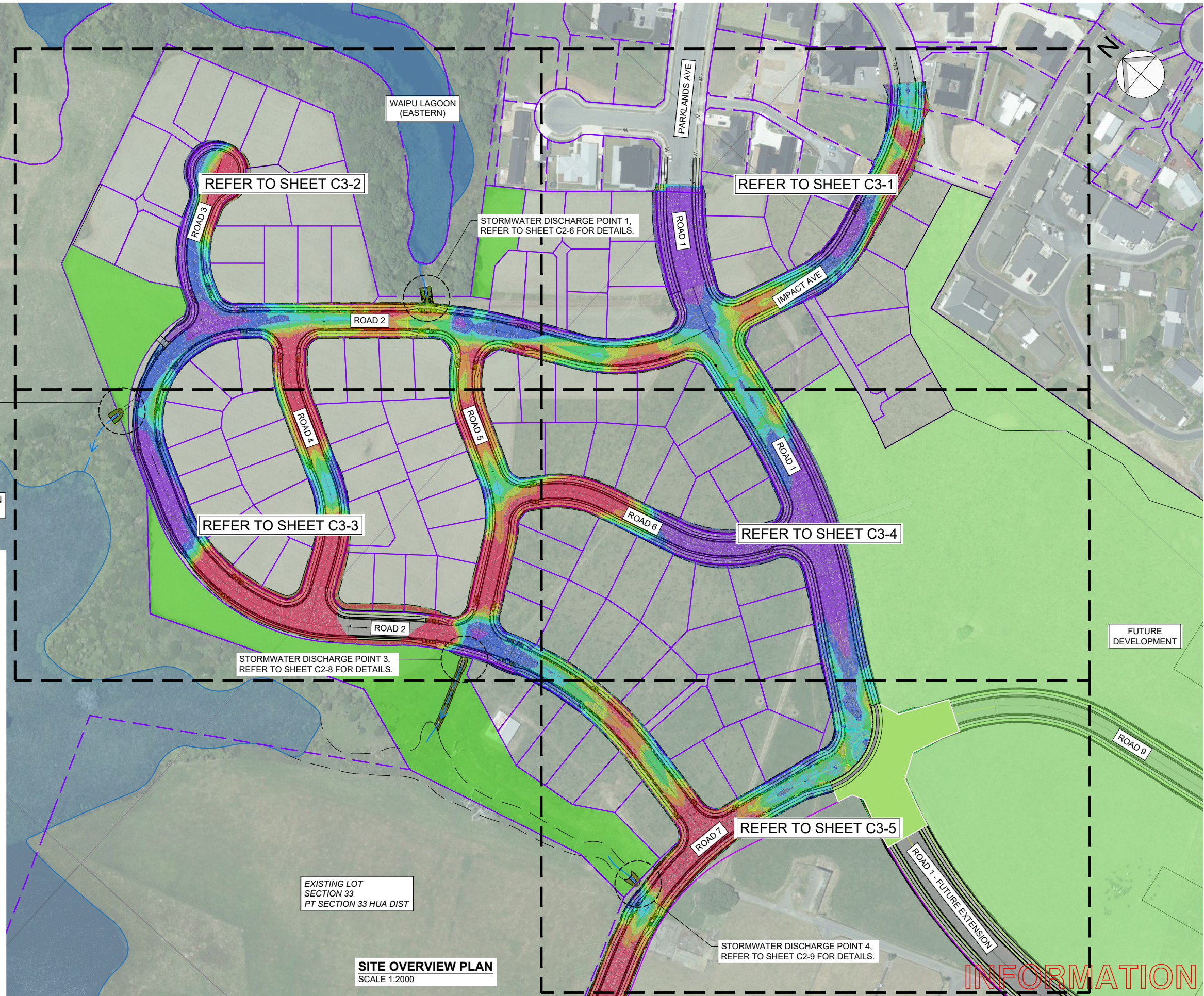
Project  
PROPOSED RESIDENTIAL DEVELOPMENT  
PARKLANDS AVENUE  
BELL BLOCK

Sheet Title  
TITLE SHEET

A3	Sheet No. C2-1	Rev. B
----	-------------------	-----------

File No.  
DWG-3917-C-01





1. ALL WORK TO BE IN ACCORDANCE WITH NPDC & STDC LAND DEVELOPMENT AND SUBDIVISION INFRASTRUCTURE STANDARD (BASED ON NZS4404:2010).
2. ANY UTILITY SERVICES DISPLAYED ARE INDICATIVE ONLY. ALL UTILITY SERVICE PROVIDERS SHALL BE CONTACTED BEFORE CONSTRUCTION COMMENCES AND UTILITY SERVICES LOCATED AND PROTECTED DURING CONSTRUCTION.
3. CHECK ALL DIMENSIONS AND LEVELS ON SITE BEFORE STARTING CONSTRUCTION WORK.
4. ALL LEVELS ARE TARANAKI LOCAL DATUM.
5. ALL PLUMBING AND DRAINAGE TO BE INSTALLED AS PER NZ BUILDING CODE INCLUDING G13/AS1 AND AS2. DRAINAGE WORKS TO BE CONFIRMED ON SITE BY PLUMBER.
6. ENGINEER TO INSPECT ALL CUT BANKS AND FILL BATTERS POST CONSTRUCTION FOR INTEGRITY.
7. ADVISE DESIGN ENGINEER OF ANY CHANGES IN THE EXISTING CONSTRUCTION AND/OR GROUND CONDITIONS TO THAT SHOWN OR IMPLIED ON THE PLANS AND OBTAIN DECISION BEFORE PROCEEDING FURTHER.
8. COMPLY WITH CONTRACTORS HSE PLAN AND COMPLY WITH HEALTH & SAFETY IN EMPLOYMENT ACT & REGULATIONS AND MAINTAIN SAFE SITE AND WORK PRACTICES AT ALL TIMES.
9. OBTAIN COMPREHENSIVE INSURANCE COVER FOR THE WORK INCLUDING PROTECTION OF ADJACENT STRUCTURES.
10. ALL WORK AND MATERIALS SHALL COMPLY WITH THE BUILDING ACT & REGULATIONS.
11. EXCAVATION AND BACKFILLING TO COMPLY WITH TNZ SPECIFICATIONS F1 & B2 UNLESS OTHERWISE SPECIFIED.
12. SEQUENCING OF THE WORK IS BY THE CONTRACTOR UNLESS SPECIFICALLY GIVEN HERE.
13. COMPLY WITH RESOURCE CONSENT AND BUILDING CONSENT AT ALL TIMES. CALL FOR ALL SCHEDULED INSPECTIONS INCLUDING FINAL COMPLETION.
14. FINAL CERTIFICATION WILL ONLY BE GIVEN WHEN UNDER THE DIRECT CONTROL OF RED JACKET LTD.

EXISTING LOT  
SECTION 33  
PT SECTION 33 HUA DIST

## SITE OVERVIEW PLAN

SCALE 1:2000

# INFORMATION



3 DAVIDSON STREET  
NEW PLYMOUTH 4310  
Ph. 06 759 0999  
© COPYRIGHT RED JACKET LTD

Client	W & C BOLTON
--------	--------------

Project
PROPOSED RESIDENTIAL DEVELOPMENT
PARKLANDS AVENUE
BELL BLOCK

Sheet Title	SITE OVERVIEW PLAN
-------------	--------------------

A3	Sheet No. C2-2	Rev. B
----	-------------------	-----------

File No.  
DWG-3917-C-01

3/06/25	B	DRAFT FOR INFORMATION	BC	LB	-	-
DATE	REV	REV RECORD	BY	CHD	VER	APP