



Subject to Council Approval

# Connecting Our Place

## Our Integrated Transport Framework

# Introduction



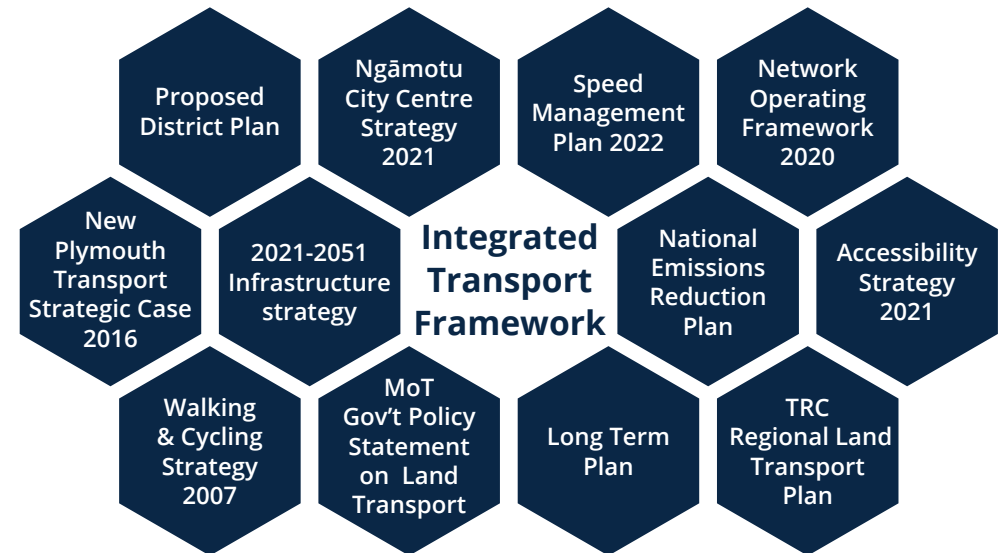
**Our Integrated Transport Framework (ITF) will shape how we approach transport investment in the New Plymouth district for the next 30 years. It will also help us achieve our vision to be a sustainable lifestyle capital.**

The ITF seeks to solve problems within our transport network and aligns to our district's long term vision, mission and goals. It will allow us to do things like reach our emission reduction targets by exploring initiatives that make public transport and active travel safer, faster, and more attractive, for example. It will also help our district become a place of opportunity where people want to live, learn, work, play and invest.

The framework is flexible and will allow us to respond to industry growth, government policy, and community feedback.

Any recommended initiatives supported by the ITF will be subject to community consultation and prioritisation through the Council's Long Term Plan.

## EXISTING TRANSPORT STRATEGIES



*The ITF consolidates the ideas and intentions of existing plans and strategies to align with our national and regional partners, such as Waka Kotahi and Taranaki Regional Council.*

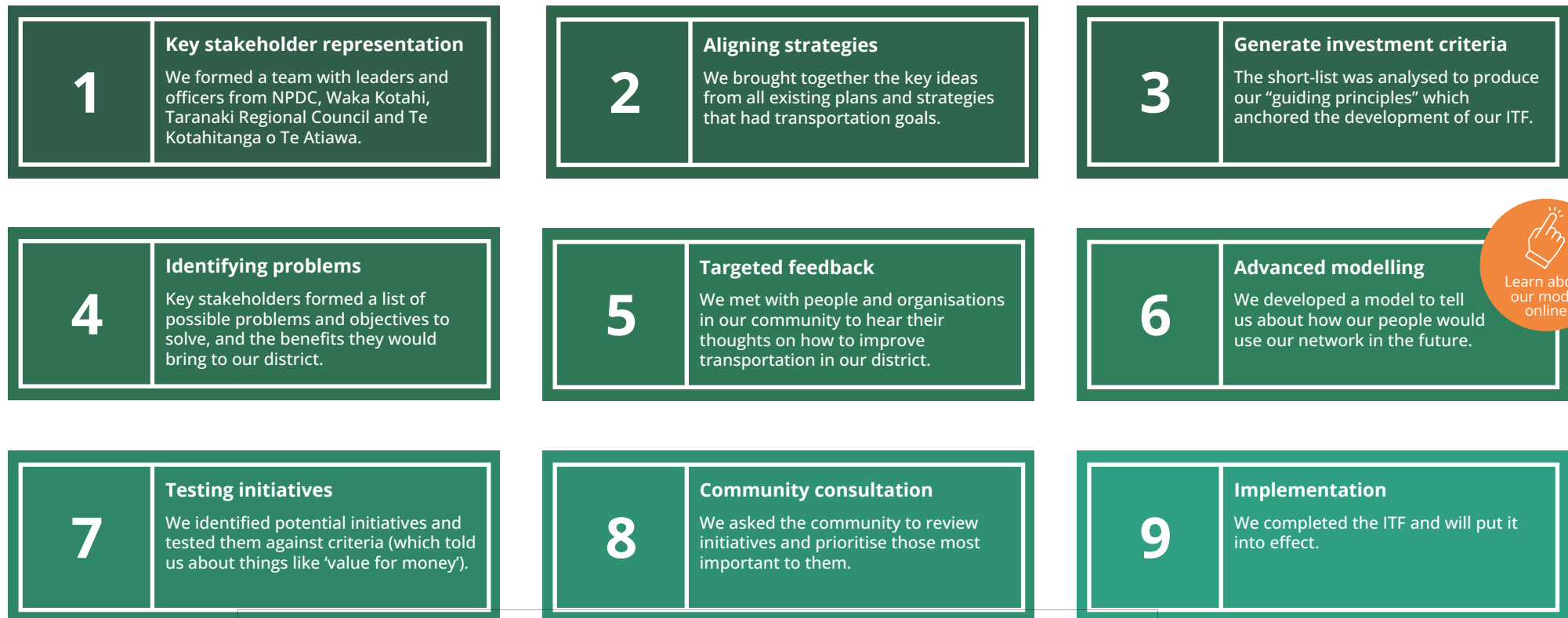
# Subject to Council Approval

# How we developed our ITF



**To better understand the long-term challenges and opportunities relevant to our district, we've brought together information from multiple sources.**

We have worked closely with key stakeholders and the community to understand a broad range of views and priorities. We have also used computer modelling to develop, test and rank different scenarios related to the future of our transport network.



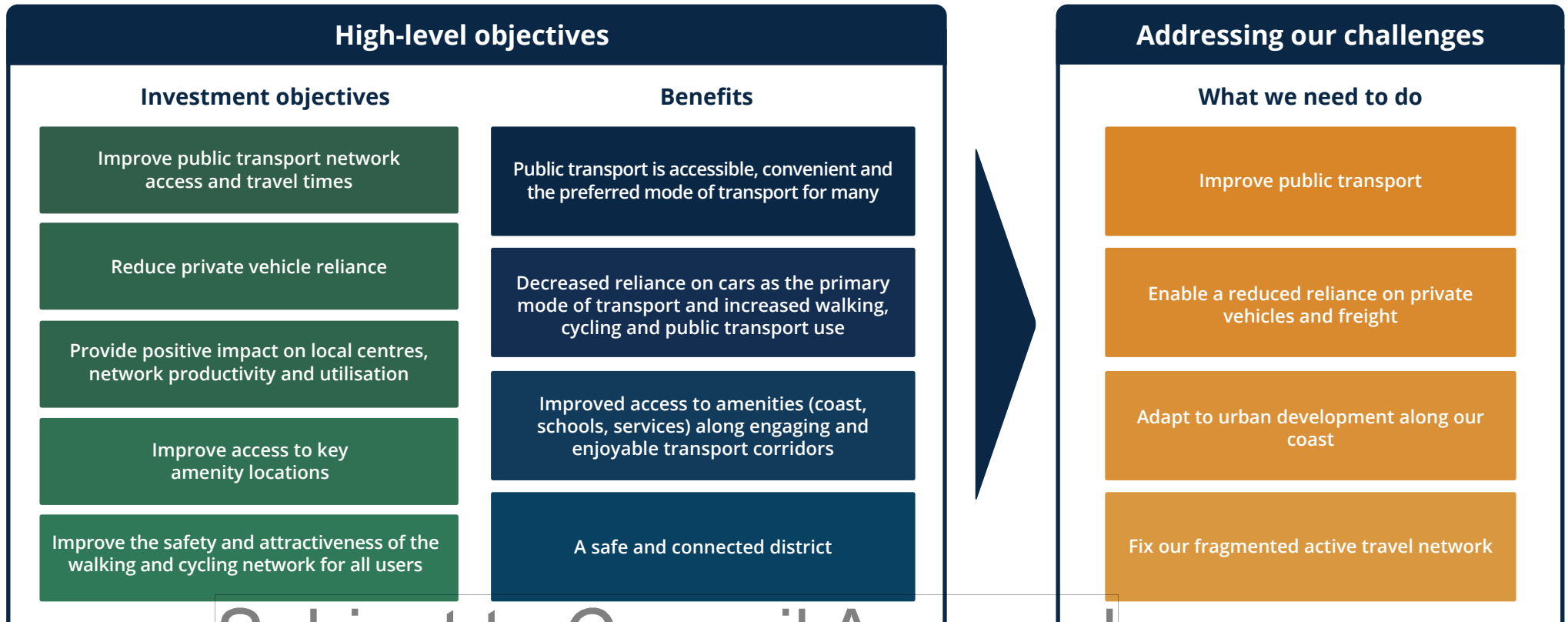
## Subject to Council Approval

# Our ITF



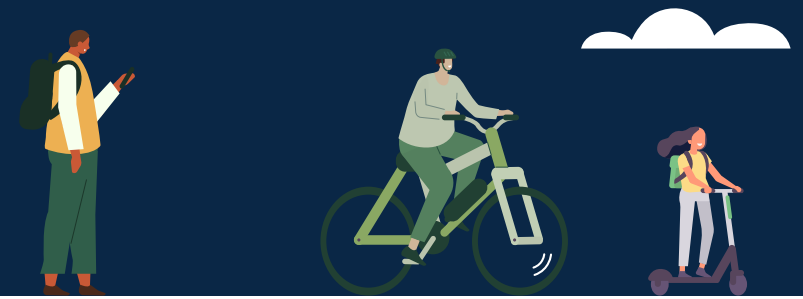
**The development process led us to five investment objectives and four key benefits. They sum up our aspirations for the future of transport in our district.**

These objectives and benefits make up the foundation of our ITF. They have allowed us to identify our key challenges (drivers for change) and what areas we need to focus on in order to achieve our goals. The proposed initiatives seek to address these challenges.



Subject to Council Approval

# Initiatives and community feedback



**We developed 70+ possible initiatives that would address our key challenges and contribute toward meeting our objectives.**

The initiatives were wide ranging and included ideas and potential projects like:

- Digital innovation (e.g. tap and go, real-time data)
- Fewer main roads through the centre of New Plymouth
- Complete the cycle network
- Increase parking fees
- Intersection upgrades prioritising active modes
- Increase number of bus hubs, stops and connections
- Connecting public transport to key destinations
- Increasing road capacity

We presented these and other initiatives to the public to understand preferences and priorities. You responded to us via online survey, Zoom hui, and by presenting your thoughts at our hearing. We also asked Research First (an independent research company) to conduct a representative survey of 500 respondents across our district.

For a full summary of community feedback [click here](#).

## FEEDBACK SUMMARY - HOW YOU PRIORITISED THE INITIATIVES

You ranked several initiatives related to each key challenge. The most and least prioritised initiatives for each are shown below:

Key challenge	Most prioritised initiative	Least prioritised
Improve public transport	Increasing the frequency of public transport and infrastructure	Increasing parking fees
Adapt to urban development along our coast	Connecting public transport to key destinations and a separate route for freight	Increasing road capacity
Enable reduced reliance on private vehicles and freight	Increasing accessibility around the district and shifting road freight to other modes	Reducing transport emissions and using alternative fuel
Fix our fragmented active travel network	Improving existing road connections, bridges and raised crossings	Reducing the road speeds

We also asked what you prioritised for our district in general:

	Most prioritised theme	Least prioritised theme
Key priority for our district	A safe and connected district	Vibrant local areas with less need to travel

# Subject to Council Approval

# Where we've landed - Our initiative package



## The process to date has allowed us to narrow down the best package of initiatives for our district to pursue.

Based on our district's unique objectives we have selected **a set of initiatives** that will best enable us to meet our goals. They have been selected based on a number of factors:

- Ability to meet our objectives in the medium and long term
- Financial viability
- Community priorities
- Alignment with local, regional and national strategies

No single initiative will help us achieve our goals - we need a combination of inter-related initiatives that contribute towards our long-term objectives. We believe this package will give us the best chance of developing a transport network that meets the needs of everyone, now and in the future.

The boxes shown to the right and on the following page summarise the key initiatives in various categories related to our transport network.

### Public transport



- Improve public transport frequency, levels of service, and reliability
- Provide more and better bus stations, shelters and stops. Improve travel times by bus. Consider bus lanes
- Align routes to key destinations and make public transport more accessible

### Active mode (walking, cycling, scooting)



- Improve facilities for people who choose to travel actively (walk, cycle or scoot) to work or education
- Complete the cycle networks in New Plymouth and district towns
- Better lighting and surfaces for gully/bush walkways and cycle paths

### Safety



- Safety improvements for our existing walking and cycling facilities
- Improve the safety of our busy intersections
- Safety improvements around schools and local centres
- Bridge widening to accommodate walkers or cyclists

# Subject to Council Approval

# Where we've landed - Our initiative package *Continued*

## Land use



- Increase population density near urban centres to improve access to key services and to ensure public transport is efficient
- Encourage higher density residential development along frequent public transport routes
- Encourage development of local centres in new growth areas

## Travel demand



- Refresh our parking strategy
- Investigate how parking works for everyone
- Supporting creating travel plans for schools and work places
- Identify ways of funding big transport projects

## Resilience



- Ensure people get where they need to go, when they need to, and be able to choose the method that suits them best
- Manage access on and off major roads, such as State Highways
- Traffic signal improvements
- Explore rerouting freight and through-traffic around New Plymouth and town main streets

## Road and street



- Improve the opportunities for people who live outside New Plymouth to try walking and cycling, public transport and car sharing
- Review street designs to ensure they are meeting community needs
- Explore measures such as traffic calming, kerb build-outs, raised crossings, signalised intersections and streetscape upgrades into urban areas, around schools and local centres



## Learn more online

Each initiative has a number of different aspects and possible impacts on our transport network. Head to the [Transport Projects](#) section of our website to learn more.

## Freight



- State highway improvements to address safety, reliability and route resilience
- Investigate opportunities to shift freight to other modes
- Improve our transport network to support productivity and efficiency

# Subject to Council Approval

# Next steps

**We now need to conduct research to gain an in-depth understanding of the proposed initiatives. This step is important to ensure we're selecting the right solutions for our district.**

To do this we need to commission studies that will clarify a number of key long-term questions, such as:

- Now that we know it's a priority, how do we deliver better public transport?
- What would encourage people to try more walking and cycling?
- Are both the community and our industry getting what they need from the roads they use?
- How can parking work better for everyone?

In the short term, we can start identifying whether new transportation ideas line up with this framework right away. This will help ensure we are prioritising investments that align with our goals.

From there we can test the short, medium and long term ideas we think will best support our transportation network.

## Our ongoing commitment

We will bring these big ideas to our community over the coming years to ensure we have your support.

We will review this framework regularly to ensure it continues to reflect what we want our transportation network to deliver.



## Get in touch

**If you have questions about our ITF please visit our [website](#) or contact us:**

Phone: 06 759 6060

Email: [enquiries@npdc.govt.nz](mailto:enquiries@npdc.govt.nz)

# Subject to Council Approval