

Ngāmotu Marae

NGĀTI TE WHITI  NEW PLYMOUTH

A place for our city,
our people, and future generations

Building the first marae in New Plymouth in nearly 200 years

Presentation to New Plymouth District Council June 2026



“Ngāmotu Marae brings a powerful combination of cultural significance and economic potential. This is the kind of project that helps build a vibrant, future-focused region.”

– Janet Reynolds, General Manager Destination at Te Puna Umanga Venture Taranaki



A marae for our city
A home for Ngāti Te Whiti

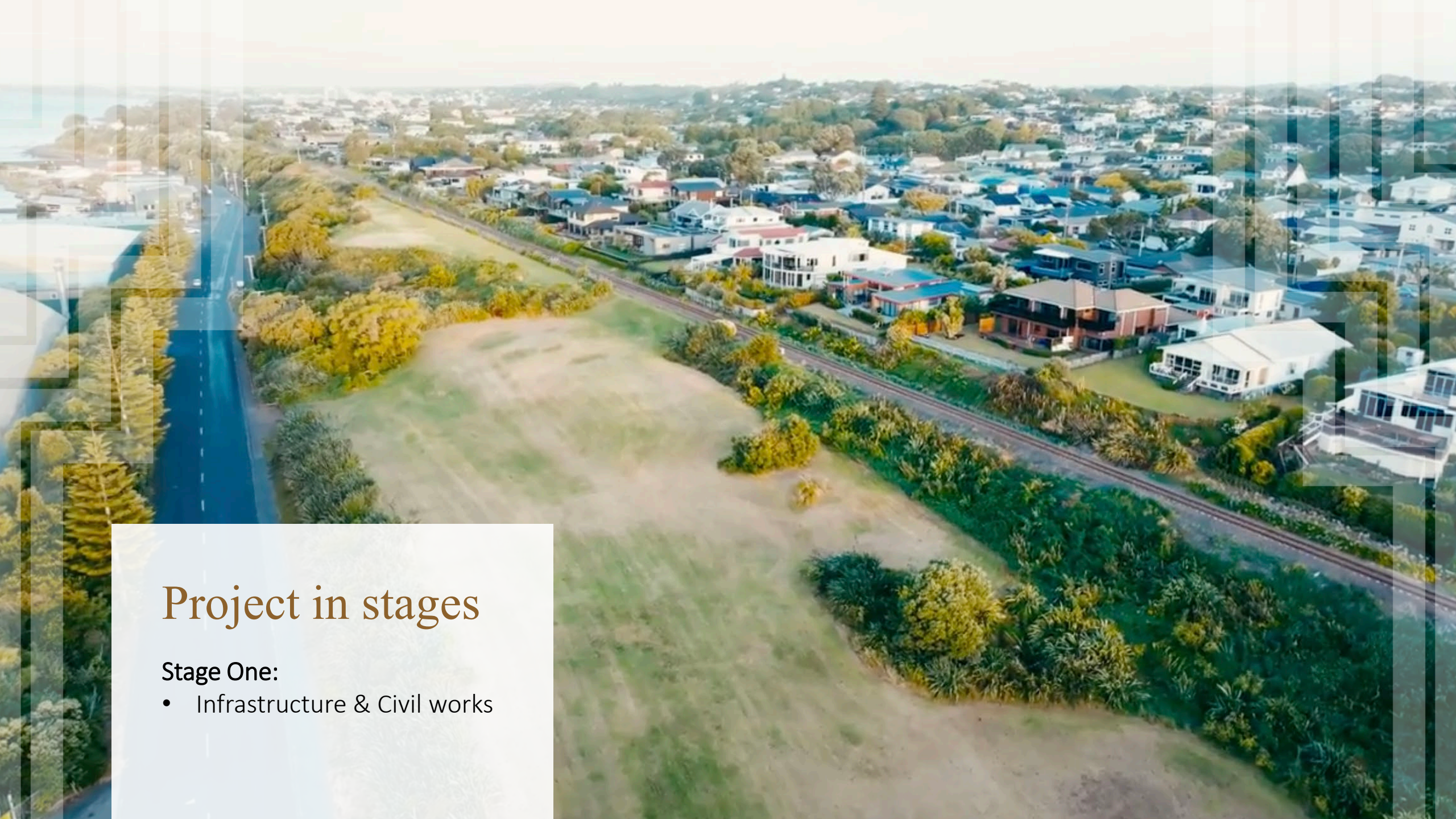
From vision to reality

Ngāmotu Marae is moving forward in stages.

Key milestones:

- Decades of kōrero and aspiration
- Bayly Road site secured on New Plymouth foreshore, adjacent to Ngāmotu Beach
- Feasibility report, planning and detailed design completed
- All Consents issued
- Building Consent issued
- Community and regional partnerships established, and ongoing fundraising activities
- Laying of Mauri, karakia, cultural induction, and turning of soil on site
- Construction of Stage One now underway – Civil and infrastructure works





Project in stages

Stage One:

- Infrastructure & Civil works

Project in stages

Stage Two:

- Wharekai / Wharenuī plus ablutions





Project in stages

Stage Three:

- Wharenui

Funding Progress

Strong momentum, but support is still needed to complete the vision.

Target:
\$17 million

Funding secured to date:
\$9.2 million

Kōwhai Partners – \$500k+

- Toi Foundation
- Te Taha Māori Property Trust – Methodist Church of NZ
- New Plymouth District Council
- Te Kotahitanga o Te Atiawa
- Ngāti Te Whiti Whenua Tōpu Trust

Tītoki Partners – \$10k+

- NZ Community Trust
- Parininihi Ki Waitotara

New Plymouth Partners
Community contributions.

Also endorsed by the Taranaki Mayoral Forum.



How businesses can contribute

Trustees have met with New Plymouth Partners seeking support for Ngāmotu Marae.

FOUNDATIONAL PARTNERSHIPS

Financial contributions at partner tiers
Support for key building elements

IN-KIND SUPPORT

Businesses may be able to assist with:

Wharekai kitchen equipment

Furniture and fittings

Signage and interpretation displays

Technology and AV systems

Landscaping and materials

Other contributions that align with your business

An opportunity for local businesses to become part of a lasting civic project.

A legacy investment for our city.

Our next steps together

Over the coming months:

- Construction of Stage One continues
- Partnerships with businesses and donors will grow
- Planning for future stages will progress

The trustees are seeking support from organisations across New Plymouth who want to help bring this vision fully to life.

Donations can be made via the Taranaki Foundation donation portal:
<https://taranakifoundation.org.nz/projects/ngamotu-marae/>

Project updates will be posted to our website:
www.ngamotumarae.org.nz

Trustees and Leadership

Ngāmotu Marae is led by:

- Ngāmotu Marae Reservation Trust

The Trustees being the initial Trustees as per the Deed of Trust, being Ngāti Te Whiiti Whenua Tōpu Trust Trustees and Ngāti Te Whiti Hapū Society Inc board members

Supported by:

- Local iwi leadership
- Community partners
- Regional organisations and businesses

Ngāmotu Marae Reservation Trust:

TRUSTEES

Shelton Healey – Chairperson

Allan Tito – Deputy Chairperson

Heydon Healey **Natalie Kirton**

Linda McCulloch **Josie Leckie**

Shane Cassidy

TRUSTEES ELECT

Tracey Harris

Philippa Fairclough

ADVISORY TRUSTEES

(appointed by the Māori Land Court)

Pauline Lockett, also General Manager

Perry Cassidy



“This project has been carried forward for generations and is now becoming reality through collaboration across the region.”

– Shane Cassidy, Ngāti Te Whiti Pou Tikanga

A place for community
A place for culture
A place for our city

Together we can create a place that reflects the past,
strengthens the present, and inspires future generations.

Ngā mihi

Ngāmotu Marae

NGĀTI TE WHITI  NEW PLYMOUTH