



Te Kaunihera-ā-Rohe o Ngāmotu

**New Plymouth
District Council**

A black and white photograph of a meerkat standing on its hind legs in a naturalistic enclosure. The meerkat is looking upwards and to the left. The background consists of a wooden fence and some tall grasses.

Brooklands Zoo Strategic Vision

DRAFT 2023



Ngāti Te Whiti - Cultural Narrative

He waka eke noa.

A waka we are all in, with no exceptions

Ngāti Te Whiti alongside Tūparikino hapū are mana whenua over the area where Brooklands Zoo is situated, within the Ngāti Te Whiti rohe which extends from the Herekawe Stream to the Waiwhakaiho River, inland to its headwaters on Taranaki and back to the Herekawe. The rohe of Ngāti Tūparikino and Ngāti Te Whiti is a cultural landscape of historical importance. The Ngāti Tūparikino hapū take their name from their eponymous ancestor, Tūparikino. Ngāti Tūparikino and Ngāti Te Whiti are hapū of the Te Atiawa Iwi.

In the words of hapū - “Our rohe was historically occupied and utilised to sustain our people and contains a wealth of occupation such as marae (meeting house), kāinga nohoanga (dwelling place), umu (oven), wāhi mahi kōhatu (quarry sites), ara tawhito (traditional travel routes), māra kai (gardens), tauranga waka (canoe landing sites), tauranga ika (customary fishing grounds), mahinga kai (customary freshwater fishing grounds), wāhi pakanga (battle sites), pā (fortified villages), papakāinga (village) and urupa (cemetery)”.

Indigenous knowledge from both hapū provides a rich kete (basket) of wisdom that relates directly to environmental stewardship, preservation and enhancement of biological diversity. For Māori there is an inseparable relationship between people, land and water. This unique relationship is fundamental to the culture of Ngāti Tūparikino and Ngāti Te Whiti.

The Strategic Vision for Brooklands Zoo aspires to elevate this understanding and embed local cultural narratives and knowledge within all aspects of the Zoo working in partnership with hapū as the vision progresses.

Draft Placeholder - confirmed narrative being finalised by hapū

Background

In the end we will conserve only what we love; we will love only what we understand; and we will understand only what we are taught. Baba Dioum

Brooklands Zoo is located within the iconic Pukekura and Brooklands Park at the centre of New Plymouth -Ngāmotu. Brooklands Zoo was officially opened to the public in 1965. Jack Goodwin, a former Director of Parks, envisaged a collection of aviary birds and small animals for the community to enjoy.

The New Plymouth Jacee Chapter and the New Plymouth Cage Bird Club were key partners that contributed to the construction of the original habitats and the acquisition of bird and animal stock. Since its opening over half a century ago the Zoo has undergone transformation as infrastructure and animal husbandry practices have evolved.

Occupying .87 hectares within Pukekura/Brooklands Park the Zoo is currently owned and operated by New Plymouth District Council.

The Council works in relationship with a number of related organisations including the following:

- Ministry for Primary Industries (MPI)- Brooklands Zoo is an approved facility.
- Zoo and Aquarium Association (ZAA) accredited member and has a Wildlife Act Authority Permit with the Department of Conservation (DOC).

The current Zoo animal collection includes exotic mammals, exotic birds, native birds, exotic farmyard animals and a range of exotic and native reptiles and

amphibians. This amounts to a total of thirty species and ninety individuals.

As a ZAA welfare-accredited member, the Zoo participates in coordinated management animal programmes for many of the species that are in our care. Records are kept on each individual animal including their family history to maintain healthy gene pools and avoid potential in-breeding issues. Reproduction is approved in advance so that involved ZAA facilities have time to plan for acquisition or transfer out to other facilities.

Brooklands Zoo is actively involved in on-site breeding programmes with cotton-top tamarins. However, other species, such as Bolivian squirrel monkeys and Capuchin monkeys, are cared for and displayed as single-sex groups that may be required to participate in future transfers to aid breeding recommendations in other zoos. The goal is to maintain healthy zoo-based populations that are not derived from animals taken from the wild.

Brooklands Zoo has a Wildlife Act Authority permit through the Department of Conservation (DOC) to assist with rehabilitating injured or orphaned native birds brought to us directly from either DOC staff or our veterinarians from the New Plymouth Vet Group. This permit is only for native and protected NZ bird species such as kereru, tui and morepork and protected reptiles, and is for non-display purposes to allow the injured bird time to recover out of the public eye prior to being released back in the wild.

In addition, Brooklands Zoo participates in a broad range of local, national and international conservation programs and wildlife research projects.

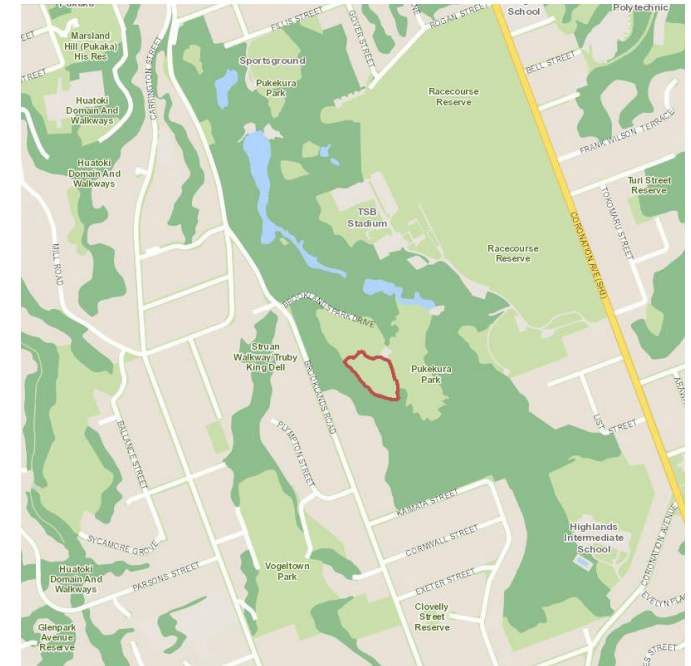


Diagram showing location of Brooklands Zoo within Pukekura Park



Visitor Profile

113,000+ visits annually

Majority of visitors go to see the animals and engage children (only 9% were playground focused)

Most are regular visitors, monthly to six months

44% are New Plymouth local

95% overall satisfaction rate

78% travel by car with 21% walking and cycling

Most hear about the zoo through word of mouth or visiting the park

Majority target age 5 - 10 year olds

Majority interested to learning/ knowing more about animals and how to protect wildlife

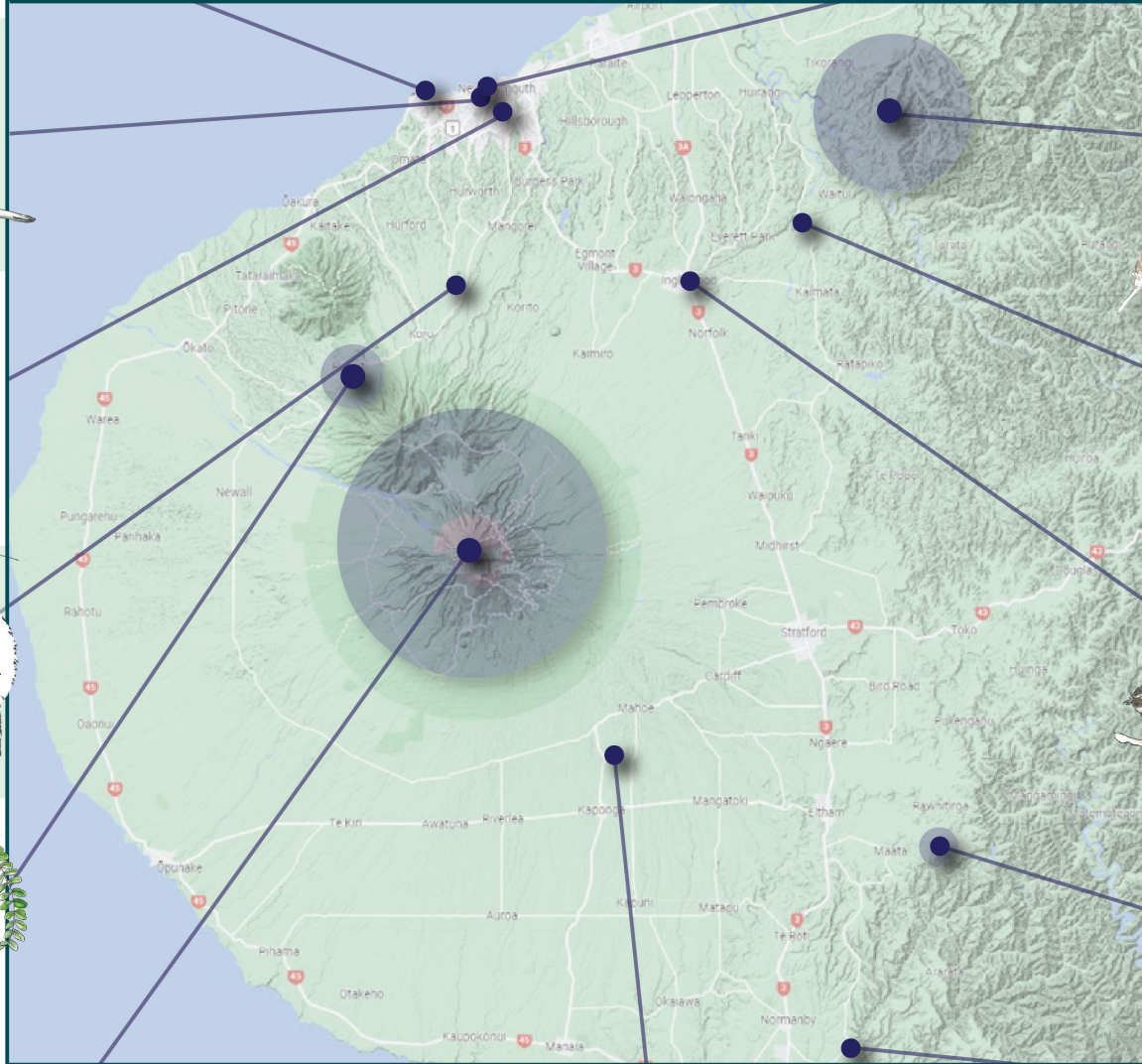
MARINE INFO CENTRE

- Run by Nga Motu marine reserve



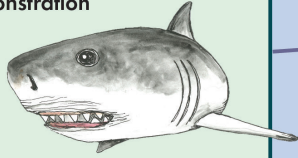
Ownership: Trust / Port

REGIONAL CONSERVATION, ANIMAL EDUCATION, ATTRACTIONS and FACILITIES



PUKE ARIKI MUSUEM

- Dynamic inside demonstration environments
- Project reef life
- Native wildlife
- Geology
- Culture



Ownership: NPDC

BROOKLANDS ZOO

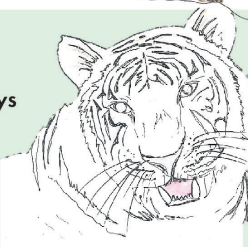
- Exotic and native animals
- Social animals
- Forest and stream themes
- Park and forest planted environments



Ownership: NPDC

POUAKAI ZOO

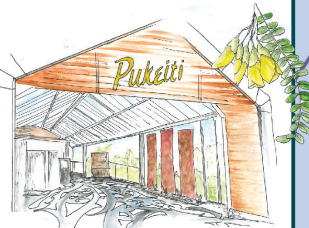
- Exotic big cats, monkeys and capuchin
- Farm animals
- Zoo / farm ecosystem



Ownership: Private

PUKEITI

- Exotic and native environment
- Tree walk
- Education trails



Ownership: TRC

TARANAKI MOUNGA

- Native montane ecosystem
- Nature wildlife and botanic mountain zones
- North Taranaki visitors centre
- Education and signage

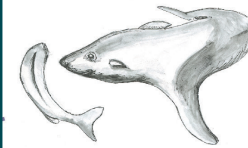
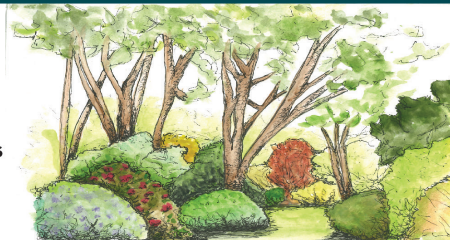


Ownership: DOC and Iwi

HOLLARD GARDENS

- Permaculture education
- Native and exotic environments

Ownership: TRC



KAWAROA DESTINATION PLAY

- Cultural / Marine education
- Playground

Ownership: NPDC

EAST TARANAKI ENVIRONMENT TRUST

- 13,000ha native forest in Purangi
- Predator control
- Native wildlife, brown kiwi, long tailed bats and kokako
- Developing education programme

Ownership: Trust



STONEY OAKS

- Farm / barn
- Bush, pond, farm and bush ecosystem

Ownership: Private



INGLEWOOD WILDLIFE RECOVERY FACILITY

- (under development)
- Bird hospital and recovery
- Kiwi
- Education centre

Ownership: Trust



ROTOKARE SCENIC RESERVE

- Predator proof fence
- Native forest
- Wetland / lake ecosystem
- Native birds
- Environmental education programs

Ownership: Trust



TAWHITI MUSEUM

- Bush train
- Bush environment
- Cultural history
- Inside demonstrations

Ownership: Private




Our Vision

Brooklands Zoo envisions a future where we all work in partnership to nurture our taiao (environment) and live sustainably for the well-being of all living things.

Our strategic vision and purpose is guided by the following goals:

CONNECT - CARE - CREATE - CONSERVE

Our Purpose



Brooklands Zoo will be an inspiring, fun and safe place to champion interest and love for the natural environment and support conservation efforts both locally in globally.

Our strategic vision and purpose is guided by the following goals:

CONNECT - CARE - CREATE - CONSERVE

Connect



We will provide opportunities for our community to connect positively with the natural world

Zoos, as centres of excellence for the care of and connection to living animals, are constantly evolving and responding to both conservation needs and societal expectations. Although the primary motivation of most zoo visitors may always be recreational, a huge global audience means zoos have an increasingly unparalleled opportunity to enhance public connectedness with and understanding of the natural world through both on-site and virtual live animal experiences.

There is an increasing body of knowledge demonstrating that visiting immersive, naturalistic exhibits in zoos can also improve human health and well-being, both physiologically and psychologically. Zoos inspire wonder, curiosity, and a sense of possibility in people of every age and from every background.

We provide a wide range of social, emotional and environmental learning experiences at the Zoo and increasingly in the virtual world. These experiences can spark a profound sense of understanding, empathy, and engagement that leads our community to the development of a deeper commitment to conservation.

What we'll do

- Develop conservation ambassadors via the Zoo's volunteer programmes and education partnerships.
- Provide high quality educational interpretation integrated within the animal exhibits.
- Continue and expand keeper talks and educational opportunities.
- Provide for small-scale hireage for events/parties within appropriate spaces within the Zoo.



In recent years, there have been significant advances in the science of animal welfare and wellbeing. This has resulted in big changes in modern zoos and aquariums. Today, excellent zoo habitats and care are aimed at providing each animal with everything it needs to live a rich and flourishing life, guided by the Five Domains of Animal Welfare Science. These precepts are being continuously reviewed and monitored as new knowledge emerges, ensuring that the Zoo provides the best care possible for its animals.

Brooklands Zoo is ZAA Welfare Accredited facility, and our community cares deeply about the wellbeing of the animals at our Zoo.

We will care for our animals with optimal environments that provide enrichment, wellness and well-being.



What we'll do

- Continue to monitor and evaluate the ethics of maintaining animals at the Zoo and provide for best practice approaches for species management.
- Engage with our key partners for events and activities within the Park to ensure ongoing conversations about animal welfare.
- Ensure professional expertise is shared within the region and that Brooklands Zoo supports and promotes regional conservation goals.
- Provide opportunities for our visitors to see and experience the “behind-the-scenes” aspects of animal care.
- Maintain Wildlife Rescue and Rehabilitation work in partnership with other facilities (eg. Inglewood Wildlife Rehabilitation Facility)

Create



We will create immersive and naturalistic habitats that inspire

Creating truly immersive naturalistic exhibits, with engaging and interactive interpretive elements, has been demonstrated to both enhance visitor engagement and increase conservation-based knowledge.

Through a combination of live animal displays and creative educational messaging programmes, zoos have the opportunity to influence their visitors, eliciting emotions and encouraging them to action to change their behaviour to help conserve wildlife. Although the role of zoos in changing visitor behaviour is a relatively new idea, it comes with incredible conservation potential, and creates a huge range of new research possibilities and opportunities to integrate in situ and ex situ conservation efforts.

Creating the opportunity to participate in such important social experiences and learning has led the Zoo to maintain the current free-entry, thus ensuring that it is accessible for all.

There has always been an aspiration to ensure the zoo is accessible to all residents of New Plymouth, hence the current free entry.

Brooklands Zoo is the only free zoo in New Zealand. With increasing costs associated with high quality and enriched animal exhibits that improve animal welfare there may be a need to explore how the zoo is funded to ensure its ongoing ability to provide a quality zoo experience.

What we'll do

- Ensure affordable access to a Zoo experience for locals and visitors.
- Make our spaces welcoming and inclusive of all people and abilities.
- Create inspiring experiences with animals that elicit wonder, delight and increased awareness.
- Provide leadership in sustainable environmental practice within the Zoo operation (including zero waste and water conservation).

Conserve



We will increase conservation education and awareness and support native species and habitats to thrive in Taranaki

One quarter of all the world's known species of animals are currently threatened with extinction in the wild.

Zoos are playing an important role in protecting our wildlife for the future. Brooklands Zoo is proud to promote cotton-top tamarins through Proyecto Titi. Proyecto Titi is a conservation programme that combines field research, education initiatives and community programs to make the conservation of natural resources economically feasible for local communities in Colombia.

Because all wildlife and habitats are in the care of humans, we must confront one of the most profound ethical questions of our time: whether humans have the wherewithall to be able to live sustainably on our planet with all of Earth's creatures.

Collectively, accredited zoos and aquariums already contribute one of the largest shares of financial support to wildlife conservation and species survival around the world. By leveraging powerful emotional and educational experiences with animals, Brooklands Zoo can help build and sustain the commitment to wildlife conservation inspiring and empowering many more people to take significant and measurable action.

What we'll do

- Inspire our community to embrace and act for wildlife conservation.
- Continue to link with global conservation efforts to save endangered species and ecosystems (eg. Tamarin Proyecto Titi).
- Provide educational and interpretive resources that encourage urgent and accessible action for habitat and species conservation.

Brooklands Zoo has a Wildlife Act Authority permit through the Department of Conservation (DOC) to assist with rehabilitating injured or orphaned native birds brought to us directly from either DOC staff or our veterinarians from the New Plymouth Vet Group. This permit is only for native and protected NZ bird species such as kereru, tui and morepork and protected reptiles, and is for non-display purposes to allow the injured bird time to recover out of the public eye prior to being released back in the wild.

Our Responsibility for Kaitiakitanga - guardianship and protection

If we pollute the air, water and soil that keep us alive and well, and destroy the biodiversity that allows natural systems to function, no amount of money will save us.

David Suzuki

In May 2019 the United Nations reported that one million of the world's species are now at risk of extinction, many within decades at a rate greater than ever in human history.

Taranaki is leading national and global initiatives in areas of conservation, biodiversity and sustainability. These include; Restore Taranaki, Wild for Taranaki, Predator Free Taranaki and the Taranaki Mouna project.

In addition, there are a range of regional facilities and sites that provide conservation education and animal experiences. There is an opportunity for Brooklands Zoo to become a portal to showcase these regional offerings. By working collaboratively, better sharing knowledge and resources, creating partnerships to mobilise the wider Taranaki community.

The two proposed over-arching themes for Brooklands Zoo focus on highlighting the link between nature and people. Our unique Taranaki environment is highlighted through the forest and stream habitats while the importance of family is demonstrated through a theme that reflects on whanau and living together.

Whānau family & living together

Human beings are social creatures. We are wired to connect with others and to thrive in strong relationships.

Animals can teach children about family structures and loyalty and how different species co-exist and benefit from each other.

The Maori notion of whānau becomes an overarching theme for Brooklands Zoo within the concept plan. For whānau is defined in different ways, for some it is by whakapapa and the connections people hold. For others, whānau is the people and the place that you feel that you belong to. Whānau relationships are different for everyone.

In modern day society, whānau can also be described as a group of people who are not related, but who are bound together to fulfill a common purpose, share a common cause or interest. This breadth of understanding of whānau provides a rich opportunity to highlight connections and link the concept of living together to the experiences at the Zoo.



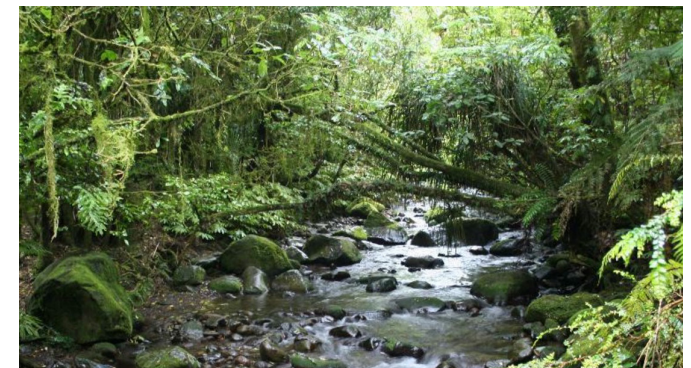
Ngahere and Awa Forest and Streams

Taranaki has a complex web of forest and stream environments that form a characteristic feature of our landscape.

The Strategic Vision for Brooklands Zoo highlights the unique landscape of Taranaki, with over 500 streams and an interwoven network of waterways and native forest areas.

Forty percent of Taranaki's land area is currently in indigenous forest and shrubland. It is estimated that since the arrivals of humans, around 60% of Taranaki's indigenous forest and shrubland has been cleared. In these areas ecosystems are fragmented and reduced in area, resulting in reduced habitats for threatened and at-risk species.

Maintaining Taranaki's native biodiversity ensures the continued survival of indigenous plants, animals and ecosystems important to all of New Zealand.



Zoo Concept Design Statement

“In many ways, that’s what zoos have to do is get people to think, to ask questions and to have conversations. We put people in that comfortable space which inspires people to care and talk to others.” Becca Hanson - Brooklands Zoo Designer

The long-term vision for Brooklands Zoo is to enhance connections between the Zoo and the broader Pukekura Park and Brooklands environments. By doing this the Zoo will feel more embedded and supported by a special landscape setting and build a basis for a more cohesive thematic concept that will make sense to the visitor.

The concept plan retains Brooklands Zoo’s smaller-scale and more intimate size. Visitor experiences will be enhanced through habitat designs that elevate learning and conservation messaging while also improving animal habitats in line with best practise animal welfare. In addition, more efficient animal husbandry and keeper movement and servicing will be provided for.

The Zoo’s animal collection will be rationalised around the core flora and fauna characteristic of social species. This provides an opportunity for the animal collections to be maintained with species that are more adept at coping with the noise and activity inherent in the location of the Zoo within this multiple-use event site. New habitats will be constructed to ensure high quality noise attenuation techniques that will further support animal wellbeing during events within Pukekura and Brooklands Parks.

Animal habitats will focus on elevating the link between

the visitors, the animals and their habitats in order to reinforce the interwoven nature of the world. The display of animals within a natural setting intensifies not only the visual, but also the emotional impression given by the animal to the visitor. The result is an immersive and sensory experience where visitors and animals share a common landscape.

Due to it’s size, Brooklands Zoo’s main role within the regional context will be of advocacy and education. To spark the interest of visitors to inspire them move beyond the Zoo to explore other wild places within the region eg. the proposed Inglewood Wildlife Rehabilitation Facility, Purangi and Lake Rotokare.

Brooklands Zoo is an inner-city urban zoo. This, together with spatial constraints within the park setting, has consequences in relation to the number and type of animal species that should and can be housed. Bringing new animals into the Zoo can be expensive and logistically challenging and careful decisions need to be made about species selection to ensure best practice welfare needs are met.

Sustainable animal collections are also reliant on partnerships with other Zoos. The ZAA is a key partner that the Zoo needs to work alongside in order to facilitate good species and collection management.

The Ministry for Primary Industries’ (MPI) role at zoos in New Zealand is to ensure that animals of regulatory interest are contained and that animal welfare requirements are met. MPI monitor the animal habitats to ensure that they meet the required containment standards. Currently there are two exhibits (the free flight aviary and Capuchin/Tamarin exhibits that

will require renewal in the short term to meet MPI requirements.

Total species numbers will be reduced by approximately one third so that higher quality habitats can be developed for species that are more adaptable to the types of activities that occur within the park. Key features of the new concept include:

Keeper only access - a pathway between the boundary fence and new habitat areas- resulting in back-of-house management and maintenance being easy and quick without disturbing the visitor experiences.

Pukekura Wildlife Corridor- a conceptual corridor through the Zoo that connects from the entry through to the backdrop of native forest at the rear of the Zoo. Native trees will connect through the central area providing shade and avian flyways.

Pukekura Forest Canopy Walk (see following pages)

New Zoo Entry- building on the existing heritage gate entry, a new double-sided toilet will provide for both the Zoo and Brooklands Park. Cafe food truck location will be supported with picnic tables within Zoo and at Envirohub.

Social Spaces (see following pages)

Nature Play (see following pages)

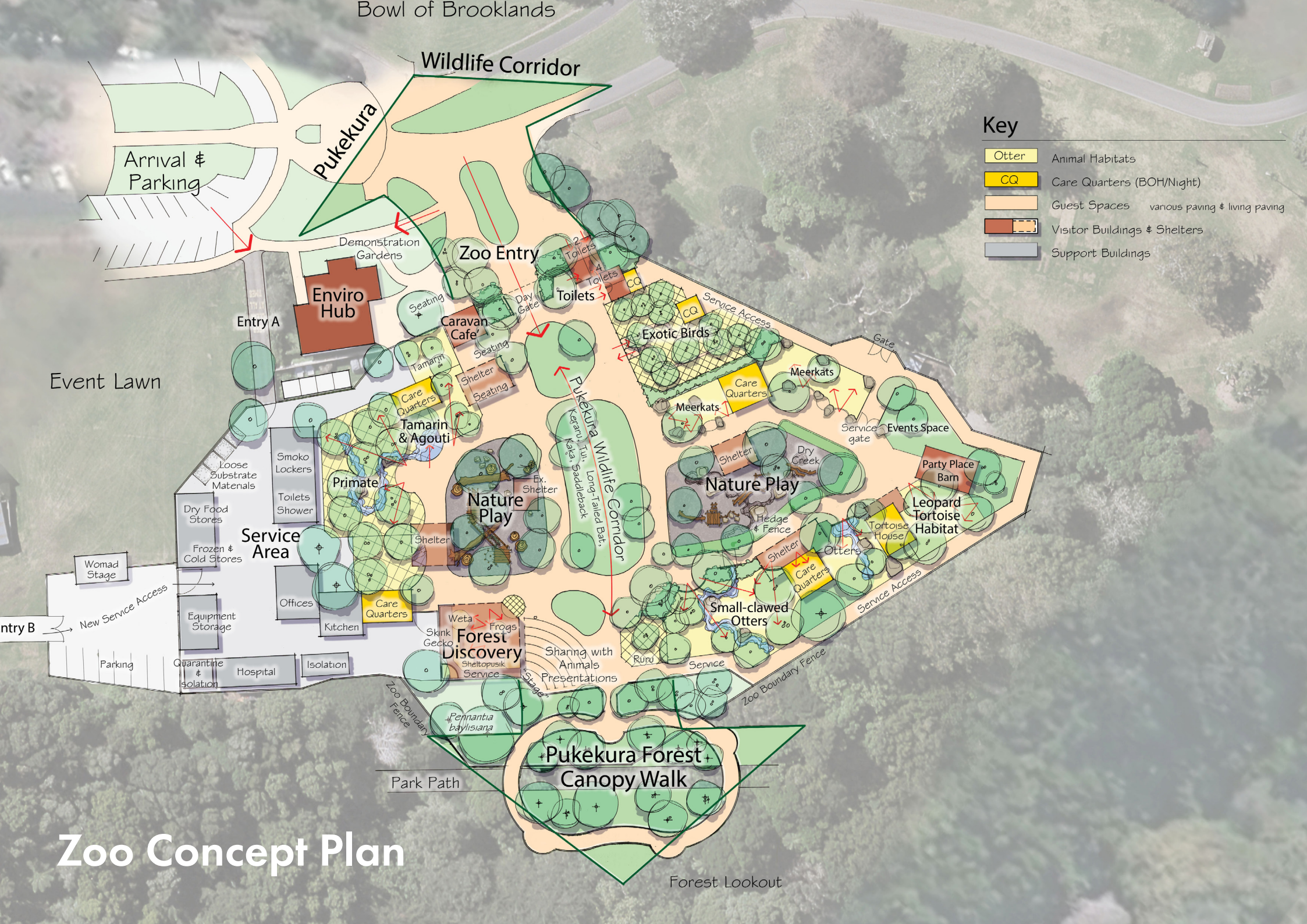
Animal Habitats (see following pages)

Education Facilities (see following pages)

Wildlife Corridor

Key

- Animal Habitats
- Care Quarters (BOH/Night)
- Guest Spaces various paving & living paving
- Visitor Buildings & Shelters
- Support Buildings



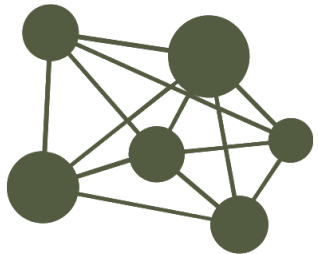
Zoo Concept Plan

Forest Lookout

To ensure alignment between animal collections, education and advocacy, a series of over-arching themes has guided the zoo concept plan and strategic vision.

Zoo Themes

Flora and Fauna Characteristics



Social species

Themes



Whānau

Living together

Animal Collection

Local Natives



Select Exotic Guests



Setting: Habitats/Homes



Up in the Trees



On/Under the Ground



In the Water



Ngahere and Awa

Forest and Streams

Exotic Guests

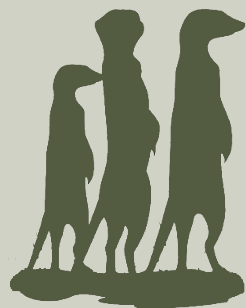


Cotton top tamarin
(*Sanguinus oedipus*)

Tufted Capuchin
(*Sapajus apella*)

Australian birds
(Red winged, King, Derbyan,
Princess, Barraband/Superb
and Eclectus parrots)
Indian ring neck parrots
Rainbow lorikeet
Lady Amherst pheasant

Up in the Trees



Meerkat
(*Suricata suricatta*)

Leopard tortoise
(*Stigmochelys pardalis*)

Agouti
(*Dasyprocta leporina*)

Scheltopusik
(*Pseudopus apodus*)

**On/Under the
Ground**



Short clawed otter
(*Aonyx cinerea*)

Green and golden bell
frogs
(*Litoria aurea*)

In the Water



Naturally occurring native
birds of the Park
Kererū, Fantail, Tui, Kākā,
Grey Warbler

Inglewood Wildlife Facility
Link with native birds in
rehabilitation

Ruru as guardian

Up in the Trees

Local Natives



Geckos

Wētā

On/Under the
Ground



Vision for Species Collection

Social Spaces - sharing experiences and supporting families



Places for whanau to gather and share experiences, learn or simply be together. Party and event spaces combine with educational zones to provide a unique and diverse range of spaces for the community.

The recreational role of the modern zoo is an important aspect to be integrated. People enjoy visiting Brooklands Zoo and this is often a shared experience amongst family and friends. Evaluating how the zoo influences this “captive audience” and extends its reach to include a compassionate approach to animals and people which can further enhance the mission, value, and relevance of the

work of zoos.

Brooklands Zoo will continue to be a safe space for families to share experiences, a meal and time together. This aspect of the zoo will be supported by retention of some of the existing shelters that provide for picnic tables and spaces to gather. These will be added to with additional seating and informal gathering spaces that are located throughout the zoo environment.

These might include additional shelters, seats, open grass areas for informal picnics, shelters and picnic tables. In addition the educational spaces will also

be able to have multiple use for families, when not being used for educational events.

Forest Canopy Walk - getting into the forest and up in the trees



A blurring of the boundary between park and zoo. The portal to discussion about our precious taonga species and opportunity to see New Zealand native bird species in their natural habitats.

The forest canopy walk will connect out into the canopy of native trees that bound the western side of Brooklands Zoo.

The concept for a canopy walk of some form within Pukekura Park has been a long-standing aspiration. The contour of the forest on this edge of the zoo provides an opportunity to connect visitors directly

from the zoo environment out into the canopy of a diverse range of mature native trees, including some of New Zealand's rarest (eg *Pennantia baylisiana*).

A canopy walk provides unprecedented access to the kind of habitat which we are normally locked out of – the treetops. Tree canopies are home to a whole host of interesting creatures, as well as being a great vantage point from which to survey the natural world, and to develop a deeper appreciation of the trees themselves.

This forest currently supports a range of native bird species (occasional kaka, kereru, fantail, grey

warbler, tui). The canopy walk will allow for visitors to engage with the forest environment in a unique way while enjoying the experience of connecting with native birds in their natural environment. This provides a chance to elevate the conservation education outcomes for the zoo.

The boardwalk itself would provide for interpretive opportunities. Examples might include a listening post where the sounds of wind in tree leaves, the sound of rain falling through the canopy and maybe even a tree listening device (recently trialed at Kew gardens) where visitors can hear the sound of water surging up a trees trunk.

Nature Play - interacting with forest habitats



Providing a safe, kid friendly and highly interactive environment that directly connects to the look and feel of adjacent animal habitats - extending the sense of immersion and elevating learning opportunities through play.

The existing playground at Brooklands Zoo is well-used, but surveys of visitors highlight that it is not the main reason for a visit to the Zoo and that the focus is on seeing the animals. In order to better align the playground with the renovated animal habitats and a more immersive Zoo experience, the concept plan envisions a new playground that

spans the central area of the Zoo and provides for play experiences that are based on nature. Instead of conventional manufactured play equipment the playground at Brooklands Zoo will immerse visitors and children in a natural-style forest environment.

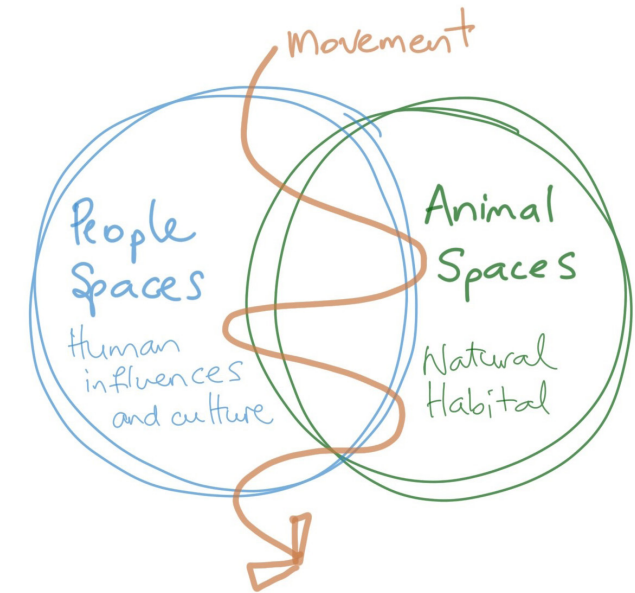
Research indicates that when children play and learn in nature, they do so with more vigor, engagement, imagination and cooperation than in wholly artificial environments.

Zoos can be an instrumental avenue for connecting children to nature, thereby contributing to the development of conservation values and

environmental stewardship.

Creating a safe, vibrant and varied natural playground that builds on the animal habitat experiences will provide opportunities to enhance the connections between humans, animals and the landscapes they share.

Animal Habitats - immersive habitats that capture the spirit of the animal



Immersive exhibits that capture the spirit of the animal and support a rich and flourishing life for the animals.

A range of existing animal exhibits are proposed to be renewed to provide for a more sustainable animal collection (ie. breeding opportunities with split habitat opportunities) and higher quality, naturalistic spaces. Animal habitats will complement the over-arching themes to ensure a cohesive narrative for visitors.

Naturalistic zoo design intensifies interactions that the visitor has with animals as they are part of an exhibit rather than a mere observer. Such

naturalistic displays are also imparting a message of greater understanding, even without interpretation.

The design of the zoo exhibit prioritises the development of a space for the animals and as such animal welfare becomes one of the most important elements. The visitor experience is woven into this, particularly when looking at the integration of people and animal spaces (naturalistic and immersive spaces).

The following principles will be considered as part of the Brooklands Zoo animal habitats:

- Animal is dominant and the visitor moves through the landscape rather than looks at it.
- Ensure the animals are seen only as part of a landscape which also surrounds the viewer.
- Provide selected views and sense of anticipation.
- Prevent cross-viewing of other people and exhibits.
- Avoid looking down on animals (current approach with other exhibit), they should be at eye level or above.

Education Spaces - engaging with learning and building knowledge



A series of learning spaces both indoor and out that provide innovative and varied opportunities to engage.

Education is key to ZAA-accredited zoos, whether it's community, school, tertiary or professional education. Across Australasia, ZAA members have developed all kinds of programs, materials and facilities to encourage people to learn more about wildlife and conservation science.

As Brooklands Zoo will be a space that builds interest in the natural environment and guides

visitors to other regional attractions, the ability for educational opportunities to occur within the zoo is an important component of the strategic vision.

Currently the Zoo has limited spaces for more formalised learning. The ability to provide spaces that schools and visiting groups can use will enhance the learning opportunities provided there.

These spaces might include a range of terraced seating for outdoor classrooms and indoor sheltered spaces for extended learning opportunities. Zoo keeper talks and immersive habitat experiences will then flow out from these

spaces. Education spaces would be designed around the proposed zoo themes.

The spaces would be designed to ensure multi-use for other appropriately scaled events that could support the Zoo. Corporate events and kid's parties are activities often provided for at zoos to build in an opportunity for income for the zoo and other educational and conservation support activities.

ETET Wildlife Facility



A partnership between the East Taranaki Environment Trust (ETET), NPDC and Pukerangiora hapū to support an initiative in Inglewood to be a nationally recognised, foundation learning centre for land and wildlife management, based on iwi principles of environmental guardianship.

In 2021 Council purchased 5.92 ha of land that adjoins Joe Gibbs Reserve alongside the Kurapete stream in Inglewood in order to facilitate a collaborative conservation initiative with ETET. ETET is a Charitable Trust responsible for

conservation of 13,000 hectares of land in the upper reaches of the Waitara River at Purangi, East Taranaki.

One of the key purposes of the Trust's existence is to broaden public knowledge of environmental protection principles and provide access to resources for the community. The Trust is a hub for volunteer activity in the Inglewood area, providing a place and purpose for a number of volunteers to undertake trap building and maintenance among other activities.

The opportunity is for a collaboration between

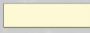
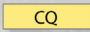
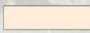

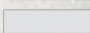
NPDC's Brooklands Zoo and a wildlife facility that provides for targeted care and rehabilitation of native birds alongside wetland education and a visitor knowledge centre. This would provide an opportunity to support the aspirations of the Zoo to have a stronger input into conservation outcomes with a 'satellite' location that provides quieter environmental qualities. This therefore supports wildlife rehabilitation and release programmes in a more suitable location.

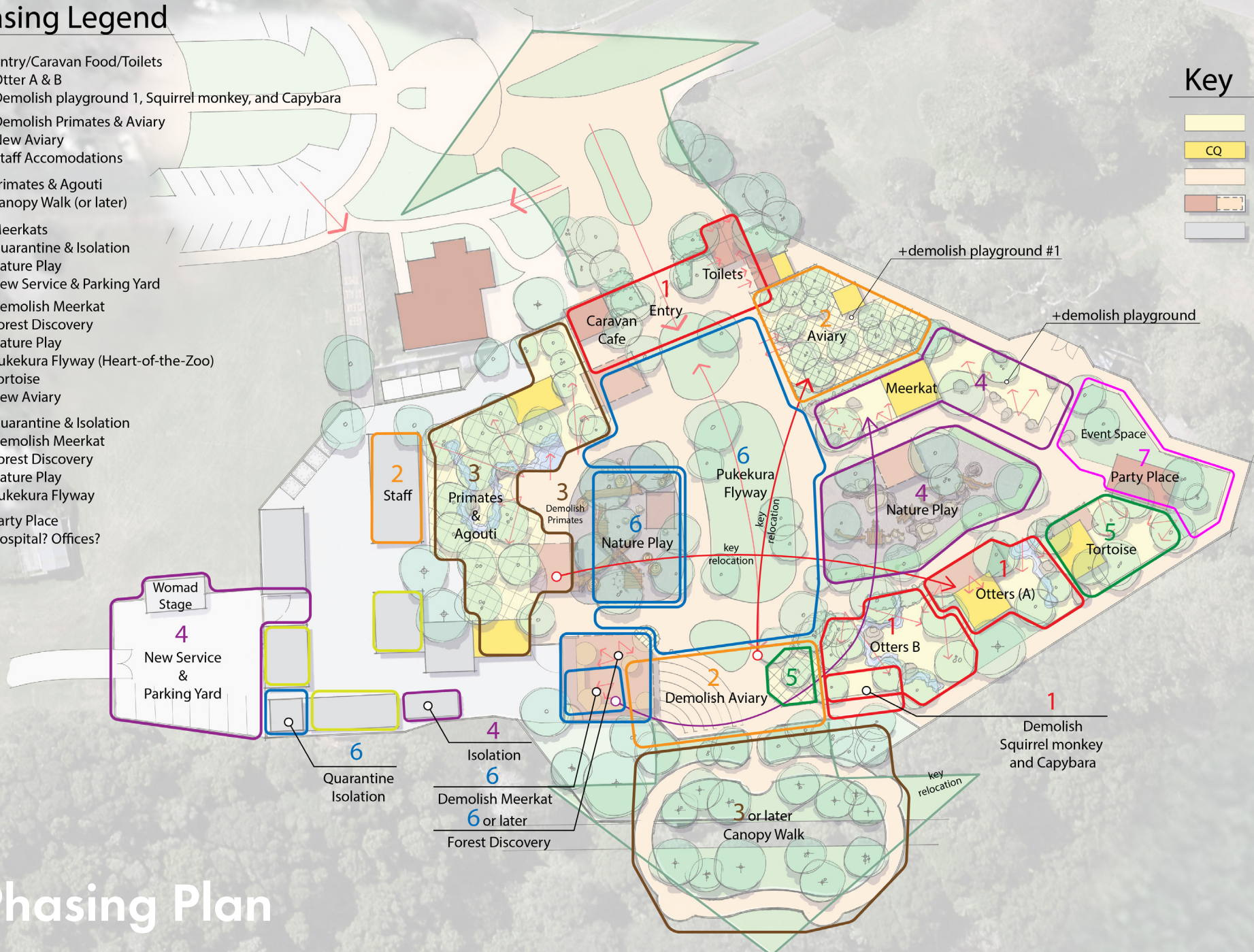
The intention is for the activity at Inglewood to complement (and not compete with) other sector participants.

Phasing Legend

- 1) • Entry/Caravan Food/Toilets
• Otter A & B
• Demolish playground 1, Squirrel monkey, and Capybara
- 2) • Demolish Primates & Aviary
• New Aviary
• Staff Accomodations
- 3) • Primates & Agouti
• Canopy Walk (or later)
- 4) • Meerkats
• Quarantine & Isolation
• Nature Play
• New Service & Parking Yard
- 5) • Demolish Meerkat
• Forest Discovery
• Nature Play
• Pukekura Flyway (Heart-of-the-Zoo)
• Tortoise
• New Aviary
- 6) • Quarantine & Isolation
• Demolish Meerkat
• Forest Discovery
• Nature Play
• Pukekura Flyway
- 7) • Party Place
• Hospital? Offices?

Key

	Animal Habitats
	Care-Quarters (BOH/Night)
	Guest Spaces (various paving & etc)
	Visitor Buildings & Shelters
	Support Buildings



Phasing Plan

Phasing and Animal Management

The concept plan for Brooklands Zoo requires consideration of both animal management (animal collection sharing between ZAA members and sustainable populations through breeding) and phasing of implementation.

The intent for the strategic vision and associated concept plan is to phase the implementation and align the work programme with key renewals and interdependencies between creating new habitats and shifting animals and demolition of the old spaces.

Wherever possible existing structures will be utilised (eg. shelters, barn and back of house service area facilities). The focus of the zoo renewal will be around enhanced animal exhibits, educational spaces and immersive nature play.

Phase	Detail
1	Build new Otter Habitats Entry Toilet block and Caravan food area
2	Build new Aviary Upgrade staff facilities (drying room, smoko)
3	Build new Primate + Agouti Habitat
4	Build new Meerkat Habitat
5	Build new Nature Play Zone (western side) Build new Leopard Tortoise + Scheltopusik Habitat
6	Build Forest Discovery Centre Build new Nature Play Zone (eastern side) Relocate small aviary for Ruru
7	Build new quarantine/isolation space Retrofit old barn to classroom and party shelter

Phases required to maintain MPI Standards (Phase 1 – 3)

'It's not just to save forests and wildlife that we're working but also for our own future – we all need forests, we all need the natural world.' Jane Goodall

